

WARNING: DO NOT USE NORMAL LOW VOLTAGE TRANSFORMERS WITH LEDS.

All LED fittings are tested before dispatch. It is not necessary to check them on site. Do not power up until fittings are wired correctly.

INSTRUCTION LEAFLET





LD10238-F1

Wall Mounted LED Spotlight

This product should be installed by a qualified electrician in accordance with all current, local legislation. For the UK, the current edition of the IEE Wiring Regulations and European Standard IEC 60364.

SPECIFICATION

LED spotlight luminaires are class III  for Safety Extra Low Voltage supply  350mA, 500mA or 700mA constant current supply.

Suitable for mounting on normally flammable surfaces. 

Lamp: **F1 Light Engine.**

This fitting is **IP67** rated.

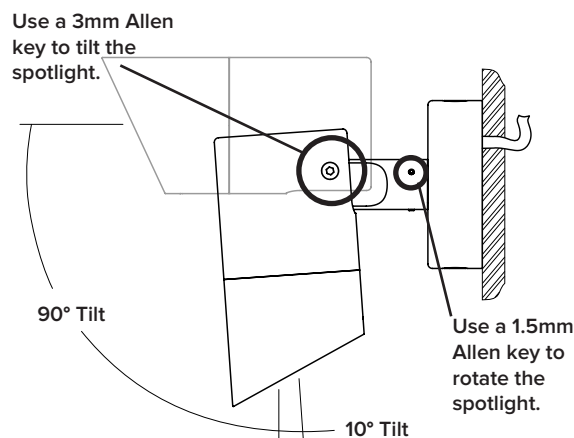
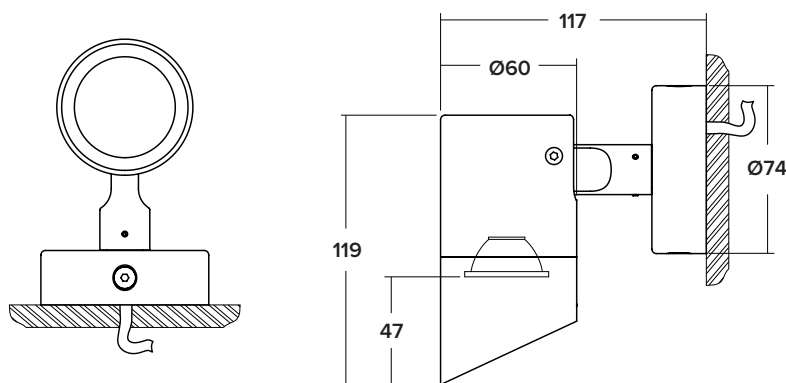
Lumen Maintenance: L90B5 at 90,000hrs at Max Ambient of 35°C.

LD10238-F1 is available in various power output options

Product & LED output code	Power Output
LD10238-F1 - 350	350mA 3.5W
LD10238-F1 - 500	500mA 5W
LD10238-F1 - 700	700mA 7W

DIMENSIONS & INSTALLATION

/SMB Surface Mount Base



1. Detach the mounting bracket, then fix bracket to mounting surface using suitable screws.

2. Drill a Ø7mm hole to feed the cable from fitting to a remote driver. Alternatively, connections can be made within the surface mount base, providing the connection has suitable protection for the environment it is in.

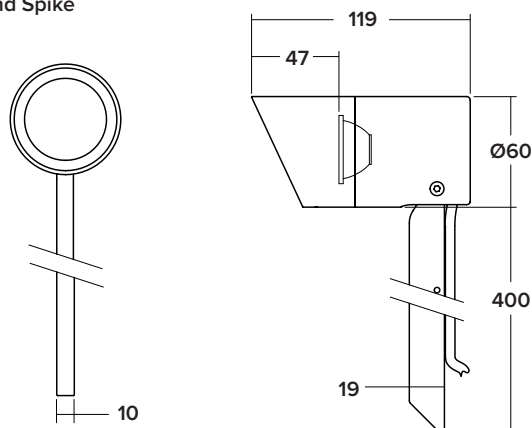
NOTE: Connections in wet environments. Make IP68 connection to stop water travelling up the cables into the fittings! Refer to IP connection sheet for further details.

3. Wire luminaire to a specified driver.

4. Re-attach the /SMB to the mounting bracket, tucking the connection inside of the housing.

5. Use specified Allen keys to adjust spotlight into the desired position.

/GS Ground Spike



1. It is recommended that users push the ground spike a minimum of 2/3 of the spike into the ground, ensuring that the fitting stays upright and is secured in place (depending on soil density).

2. Wire luminaire to a specified driver.

NOTE: Connections in wet environments. Make IP68 connection to stop water travelling up the cables into the fittings! Refer to IP connection sheet for further details.

3. Make adjustments by hand, it is a friction tilt adjustment.

DO NOT ADJUST TILT USING AN ALLEN KEY.

WARNING: DO NOT USE NORMAL LOW VOLTAGE TRANSFORMERS WITH LEDS.

All LED fittings are tested before dispatch. It is not necessary to check them on site. Do not power up until fittings are wired correctly.

INSTRUCTION LEAFLET

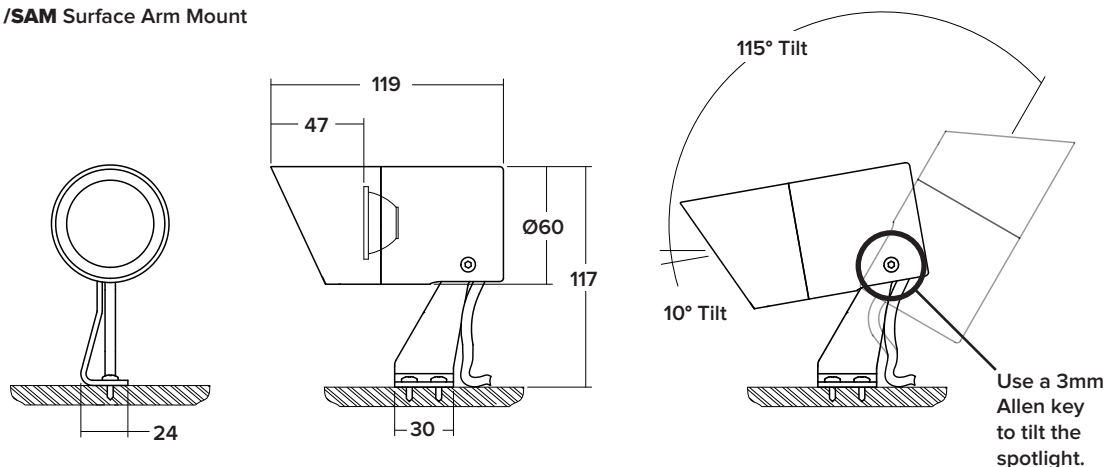


LD10238-F1

Wall Mounted LED Spotlight

This product should be installed by a qualified electrician in accordance with all current, local legislation. For the UK, the current edition of the IEE Wiring Regulations and European Standard IEC 60364.

/SAM Surface Arm Mount



1. Use specified Allen key to tilt fitting into it's maximum upward tilt position. Then mark out fixing holes.

NOTE: The /SAM allows for some limited rotation adjustment to straighten the luminaire.

2. Drill fixing holes in surface. Use wall plugs as needed.

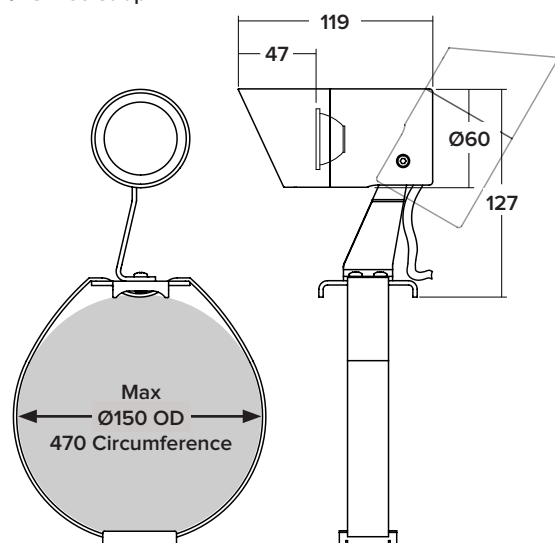
3. Fix to surface using No.6 or No.8 screws.

4. Wire luminaire to a specified driver.

NOTE: Connections in wet environments. Make IP68 connection to stop water travelling up the cables into the fittings! Refer to IP connection sheet for further details.

5. Use specified Allen key to adjust spotlight into the desired position.

/TS Tree Strap



1. Loop tree strap in and out of the bracket.

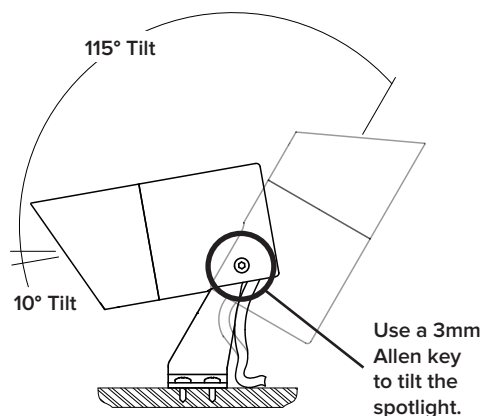
2. Position the fitting in to its desired position on the tree trunk.

3. Fasten fitting to tree. Tightening strap so that the fitting won't move.

4. Wire luminaire to a specified driver.

NOTE: Connections in wet environments. Make IP68 connection to stop water travelling up the cables into the fittings! Refer to IP connection sheet for further details.

5. Use specified Allen key to adjust the spotlight's tilt into the desired position.



WARNING: DO NOT USE NORMAL LOW VOLTAGE TRANSFORMERS WITH LEDS.

All LED fittings are tested before dispatch. It is not necessary to check them on site. Do not power up until fittings are wired correctly.

INSTRUCTION LEAFLET

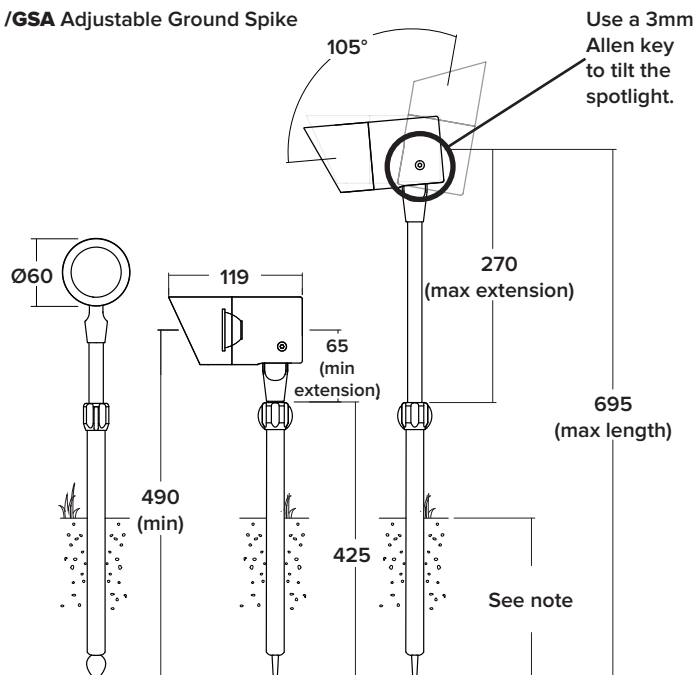


LD10238-F1

Wall Mounted LED Spotlight

This product should be installed by a qualified electrician in accordance with all current, local legislation. For the UK, the current edition of the IEE Wiring Regulations and European Standard IEC 60364.

/GSA Adjustable Ground Spike



1. It is recommended that users push the ground spike to a minimum depth into the ground, ensuring that the fitting stays upright and is secured in place (depending on soil density).

NOTE: Ground types - Soft ground: 200mm to 250mm or Hard ground: 150mm to 200mm

2. Wire luminaire to a specified driver.

NOTE: Connections in wet environments. Make IP68 connection to stop water travelling up the cables into the fittings! Refer to IP connection sheet for further details.

3. Make adjustments with a 3mm allen key as specified.

WIRING

Do not power up until fitting is wired correctly! Constant current LEDs must be wired in series, polarity is critical! Please refer to specified driver sheet for details on the minimum and maximum number of LEDs per circuit.

SEE CONSTANT CURRENT WIRING SHEET FOR IN SERIES WIRING DIAGRAM

Single Colour LED

Colour of Cable	Red	Black
Polarity	+	-

IMPORTANT

Make sure that all cables and connections are securely connected before switching on the power. Do not switch on the power source prior to making these connections as this will result in the LEDs being overvolted, which can lead to failure of the LEDs and/or the driver. If the LEDs do not work upon power up, turn off the power source immediately and check the polarity of the wiring.

MAINTENANCE

CABLE: The external flexible cable of this luminaire cannot be replaced; if the cable is damaged, the luminaire shall be destroyed.

LAMPS: The light source contained in this luminaire shall only be replaced by the manufacturer.

Please clean with soft damp cloth and avoid harsh cleaning chemicals.

O-ring replacement part numbers: Outer O-ring 17.0006
Inner O-ring 17.0059

This leaflet should be issued and retained by the end user.

Page 3/3