

LD96



Miniature Wall Mounted Double LED Up or Down Wall Washer

Data sheet - Page 1

The LD96 is a miniature version of the LD10236 up and down wall washer. Its minimal design allows it to blend seamlessly into most project styles, and will fit into the smallest of features. A choice of beam angles and LED colours offers the designer a range of uses, as well as providing the opportunity to use differing optics on opposite side of the product. The small but very robust body is machined from a solid billet of aluminium, and incorporates an integral anti-wicking barrier for added protection. The fitting is available with a choice of switch, 0-10V, DMX, Dali or mains dimmable remote drivers.

Key Features

- Excellent diffused beam shape from a range of optics
- High output from a very small fitting
- Reverse polarity protection
- Optional glare shield accessory
- Optimal spacing from mounting surface
- Typical 93 CRI in 3000K warm white
- Integral anti-wicking barrier provides increased protection against moisture
- Range of finishes available
- Variable output options
- Machined from a solid billet of aluminium
- Available with Switch, 0-10V, DMX, Dali or Mains dimmable drivers



Specification

Applications



Beam Angles

12°, 31°, 48°, 12° x 36°

LED type

1 x C1 Engine with NICHIA LED

Please note, data below is for 2 LEDs

Colour temperature	2200K / 2700K / 3000K / 4000K / 5000K		
Drive Current (mA)	350	500	700
LED power* (W)	2.4W	3.4W	4.8W
CRI (typical)	93	93	93
Forward voltage (V) ₁₀₀	6.0V	6.4V	6.8V
Delivered lumens** (L ₁₀₀)	212	276	354
Lumens per circuit watt	176	162	148

LED lifetime

L90B5 at 90,000hrs

Materials

Machined and iridized aluminium body, with a black anodised bezel

Glass

1mm thick low iron glass

Wiring

Comes pre-wired with 2 single 100mm leads, can be specified with up to 10m at extra cost

IP rating

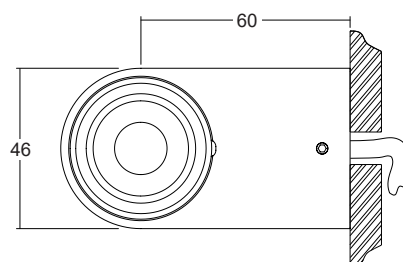
IP66

*LED wattage includes losses associated with using an 85% efficient driver

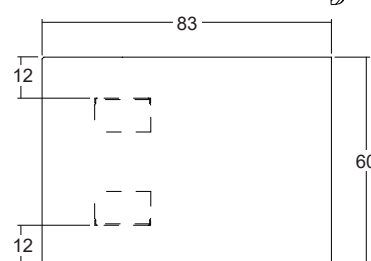
** Lumen output data applies to all colour temperatures.

Dimensions

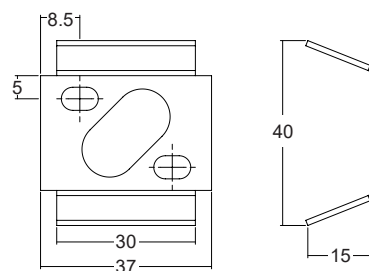
Top View



Side View



Bracket



LD96

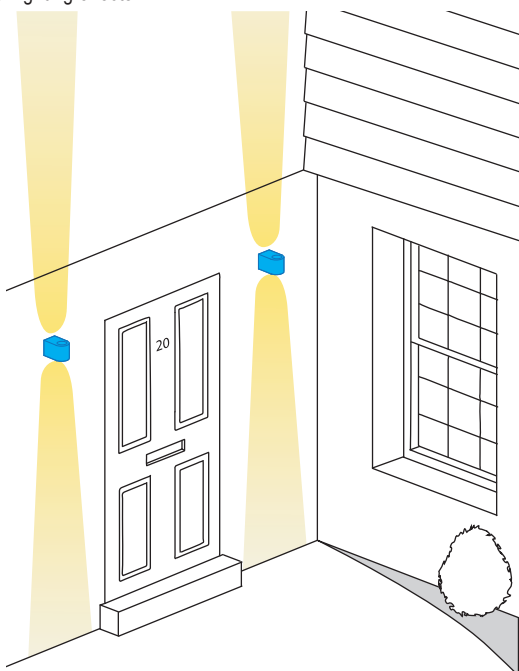
Miniature Wall Mounted Double LED Up or Down Wall Washer

Data sheet - Page 2



Applications

LD96 can be used in a wide variety of situations, internally and externally. Differing beam angles can be utilised on opposing sides of the LD96 in order to create a variety of lighting effects.



Cone Diagrams

Cone diagrams below are based on a 3000K LED run at maximum output 700mA.

Narrow Beam

700mA using a 12° optic

Distance (m)	Luminance (lx)
0.5	0.17 4743
1.0	0.35 1186
1.5	0.52 527
2.0	0.70 296
2.5	0.87 190
3.0	1.05 132

Cone Width (m)

Medium Beam

700mA using a 31° optic

Distance (m)	Luminance (lx)
0.5	0.27 2199
1.0	0.55 550
1.5	0.82 244
2.0	1.09 137
2.5	1.37 88
3.0	1.64 61

Cone Width (m)

Wide Beam

700mA using a 48° optic

Distance (m)	Luminance (lx)
0.5	0.46 1169
1.0	0.91 292
1.5	1.37 130
2.0	1.82 73
2.5	2.28 47
3.0	2.73 32

Cone Width (m)

Oval Beam

700mA using a 12° x 36° optic

Distance (m)	Luminance (lx)
0.5	0.26 / 0.16 2944
1.0	0.59 / 0.33 736
1.5	0.88 / 0.49 327
2.0	1.18 / 0.66 184
2.5	1.47 / 0.82 118
3.0	1.77 / 0.98 82

Cone Width (m)

Accessories

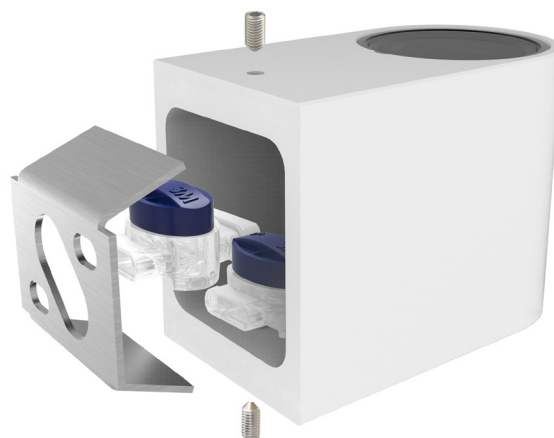
/GS - Glare shield

An optional glare shield is available for the LD96 to further reduce glare from the LED and optic. This does not reduce the light on the lit surface (wall) but will cut out some light onto the ceiling or floor.



Connections

The LD96 has been designed with enough room inside for a connection to be made to a first fix cable, and the remote drivers. It is supplied with two 3M Scotchluk™ connectors, which are IP rated for exterior waterproof applications.



Photometric files (LDT) are included in the design pack which can be downloaded from the LD96 product page on the website.

LD96

Miniature Wall Mounted Double LED Up or Down Wall Washer

Data sheet - Page 3



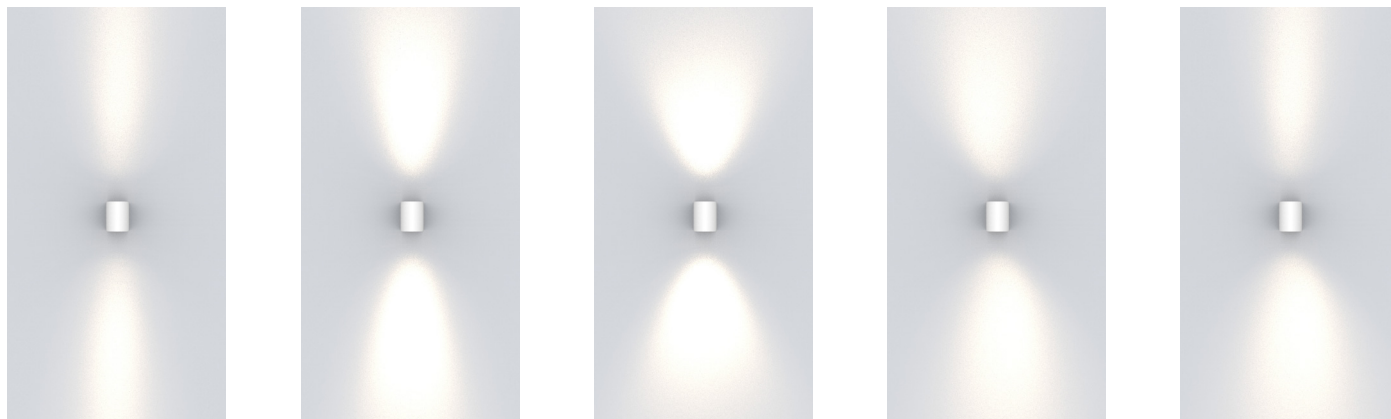
Lens Options

/NB - 12° narrow

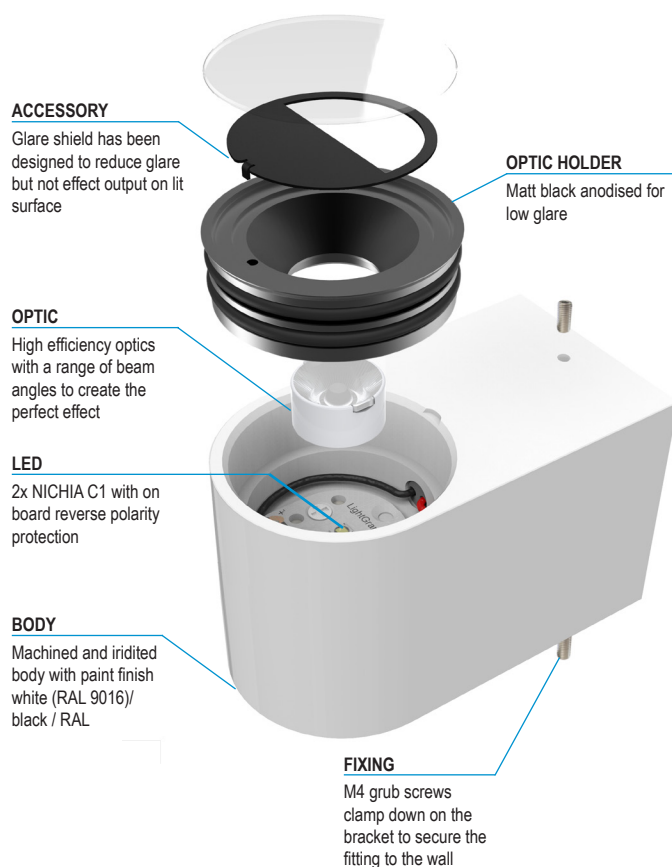
/MB - 31° medium

/WB - 48° wide

/OB - 36° x 12° oval

/NB /OB - 12° narrow /
36° x 12° oval


Product Parts



Order Codes and Options

Product code	LED colour	Lens angle	Accessory	Finish
LD96-C1- 350 - 500 - 700	<input type="text"/>	<input type="text"/>	<input type="text"/>	<input type="text"/>

Example: LD96-C1-700 / LW30 / MB / GS / White

Product codes with output options

2.4W LED at 350mA	LD96-C1-350
3.4W LED at 500mA	LD96-C1-500
4.8W LED at 700mA	LD96-C1-700

LED colour options

Super Warm White (2200K)	/LW22
Extra Warm White (2700K)	/LW27
Warm White (3000K)	/LW30
White (4000K)	/LW40
Cool White (5000K)	/LW50

*Other LED colour temperatures are available. Please speak to a member of our sales team.

Beam / lens angle options

12° narrow	/NB
31° medium	/MB
48° wide	/WB
12° x 36° oval	/OB
Different beam angle at each end	/**/**

Accessory

Glare shield (GS56T)	/GS
----------------------	-----

Finish options

Paint finish silver / black / white (RAL 9016) / antique bronze / satin antique brass / satin brass / RAL finish

Use with 350mA, 500mA and 700mA constant current LED drivers

We have a wide range of dimmable LED drivers, 0-10V, DMX, DALI and Mains dimmable.

Please see the downloads section on our website:

To run 1-7 LD96-C1-350 in series use a TXDEL350D (0-10V dimmable)

To run 1-7 LD96-C1-500 in series use a TXDEL500D (0-10V dimmable)

To run 1-6 LD96-C1-700 in series use a TXDEL700D (0-10V dimmable)