

WARNING: DO NOT USE NORMAL LOW VOLTAGE TRANSFORMERS WITH LEDS.

All LED fittings are tested before dispatch. It is not necessary to check them on site. Do not power up until fittings are wired correctly.

INSTRUCTION LEAFLET

LD38S & LD38C - T20475 Special

Exterior Linear LED Luminaire



This product should be installed by a qualified electrician in accordance with all current, local legislation. For the UK, the current edition of the IEE Wiring Regulations and European Standard IEC 60364.

SPECIFICATION

LED Linear luminaires are class III  for Safety Extra Low Voltage supply  **500mA** or **700mA** constant current supply.

Suitable for mounting on normally flammable surfaces. 

This fitting is **IP67**. See product specification for clarification.

Lumen Maintenance: 50,000 hours L70 at Max Ambient of 45°C.

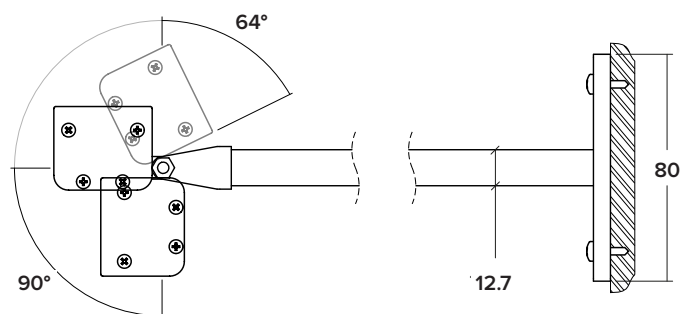
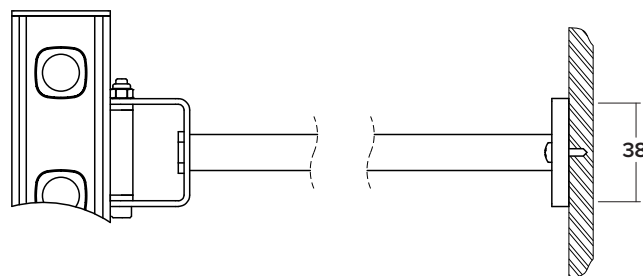
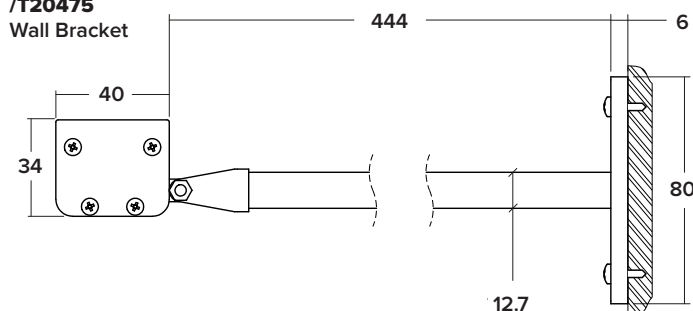
LD38S / LD38C are available in various power output options

Product & LED output code	Power Output
LD38S / LD38C - 500	500mA 1.7W (per LED)
LD38S / LD38C - 700	700mA 2.4W (per LED)

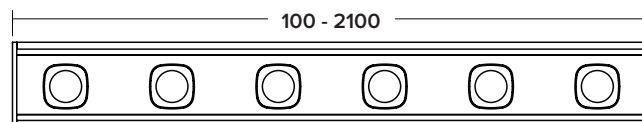
DIMENSIONS

/T20475

Wall Bracket

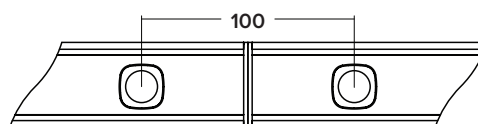
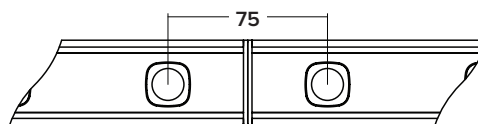
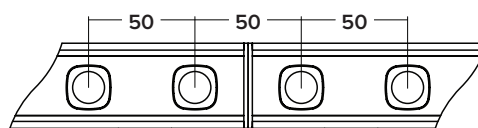


Minimum and Maximum Lengths



Product Spacing

To maintain LED between lengths, butt fittings together end-to-end as show below.

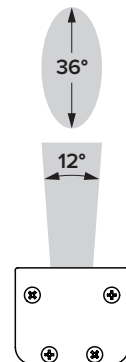
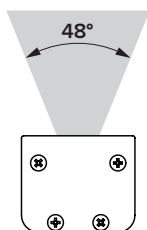
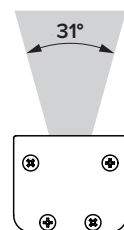
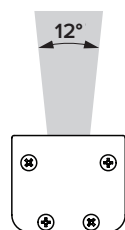


/NB
Narrow Beam

/MB
Medium Beam

/WB
Wide Beam

/OB
Oval Beam



WARNING

Do not power up LED or driver until all work is completed.
See 'important' section on next page.

**INSTALLATION INSTRUCTIONS
& WIRING INFORMATION
ON NEXT PAGE**

WARNING: DO NOT USE NORMAL LOW VOLTAGE TRANSFORMERS WITH LEDs.

All LED fittings are tested before dispatch. It is not necessary to check them on site. Do not power up until fittings are wired correctly.

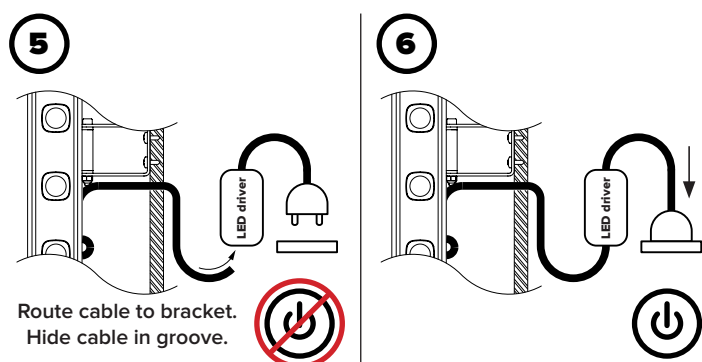
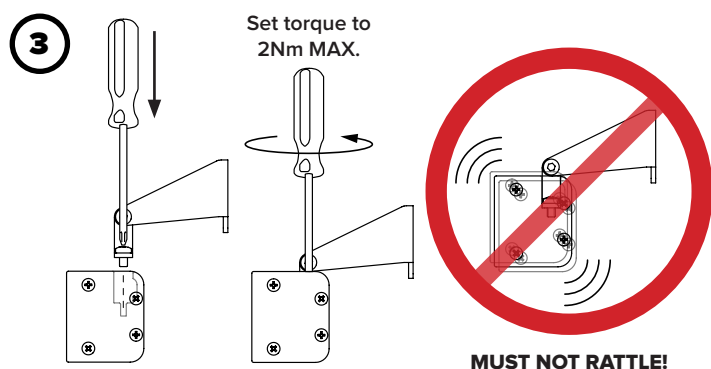
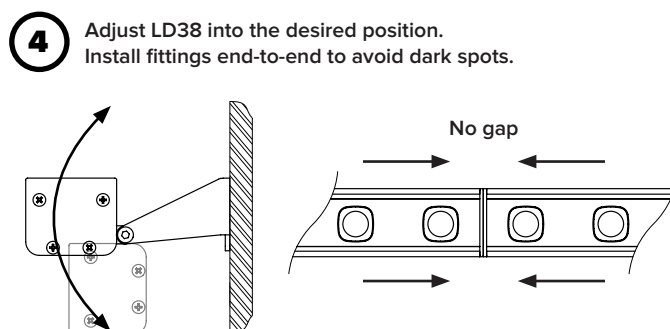
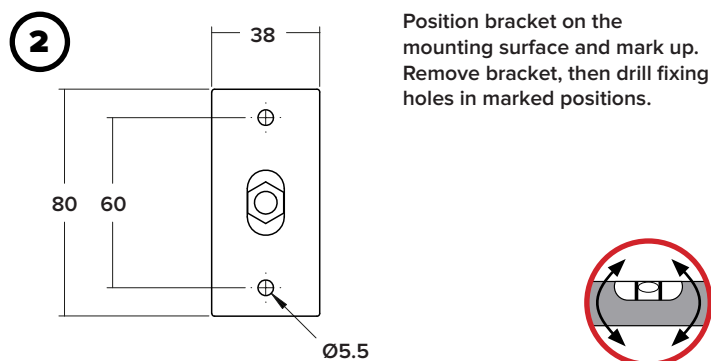
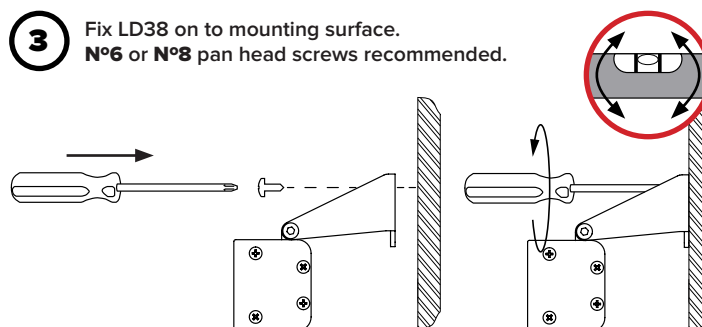
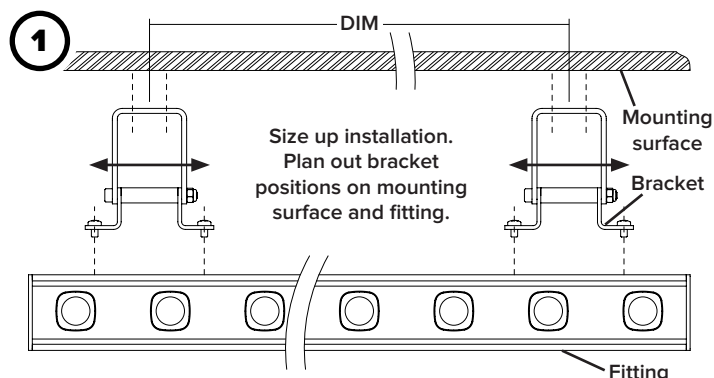
INSTRUCTION LEAFLET



LD38S & LD38C - T20475 Special

Exterior Linear LED Luminaire

This product should be installed by a qualified electrician in accordance with all current, local legislation. For the UK, the current edition of the IEE Wiring Regulations and European Standard IEC 60364.



WIRING

Do not power up until fitting is wired correctly! Constant current LEDs must be wired in series, polarity is critical! Please refer to specified driver sheet for details on the minimum and maximum number of LEDs per circuit.

SEE CONSTANT CURRENT WIRING SHEET FOR IN SERIES WIRING DIAGRAM

IMPORTANT

Make sure that all cables and connections are securely connected before switching on the power. Do not switch on the power source prior to making these connections as this will result in the LEDs being overvoltage, which can lead to failure of the LEDs and/or the driver. If the LEDs do not work upon power up, turn off the power source immediately and check the polarity of the wiring.

MAINTENANCE

CABLE: The external flexible cable of this luminaire can not be replaced; if the cord is damaged, the luminaire shall be destroyed.

LAMPS: The light source in this luminaire is non-replaceable, when the light source reaches its end of life the whole luminaire shall be replaced. Clean with soft cloth and avoid harsh cleaning chemicals.

This leaflet should be issued and retained by the end user.

Page 2/2