

## LD170

### HIGH-POWER LED INTERIOR/EXTERIOR WALL LIGHT



The LD170 is a powerful but compact, recessed wall light designed to produce a low glare uniform floor wash for interior and exterior applications. LD170 is ideal for the illumination of broad steps and pathways with its wide oval beam, integral glare baffle and 20° kick lens which focuses the beam down onto the lit surface. Available LED engines include E3 and F1 which offer colour temperatures between 2200K-5000K, with optional accessories and bezel finishes to choose from. The bezel aesthetic is minimal featuring black trim glass and no visible fixings. This is a very tough, high quality fitting, machined from high grade materials, ensuring excellent thermal and light output performance.

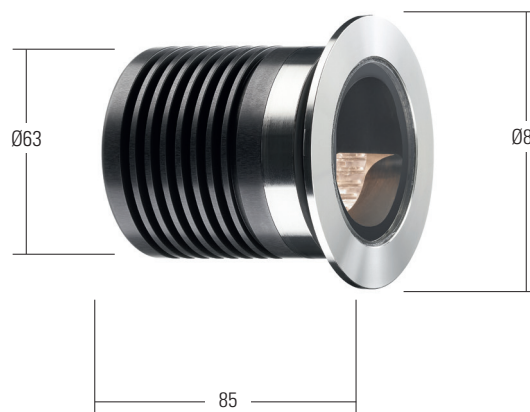
## KEY FEATURES

- > E3 engine option, featuring the NICHIA LED with up to 198 lumens, 2-step binning and reverse polarity protection
- > F1 COB, Tunable White, RGBW, 2nd channel LEDs also available
- > Straight cut edged bezel available in 316 Stainless Steel, Polished & Passivated 316 Stainless Steel, Machined Brass, Flamed Solid Bronze and RAL paint finishes
- > Integral glare baffle which minimises the light above the horizontal
- > 20° angled kick lens focuses an oval beam down on to the lit surface
- > Toughened glass with black ceramic trim
- > Fitting rated IK08
- > Single light source and optic produces a very consistent beam with no multiple shadows
- > LED and lens recessed in a matt black anodised body for reduced glare
- > Hidden fixing with first fix sleeve with O-rings
- > Switched, 0-10V, Casambi, DMX, DALI or Mains dimmable drivers available

## DIMENSIONS

*Dimensions in mm*

For full dimensions and for accessory dimensions please go to page 4.



## SPECIFICATION

Engine	 E3	 F1
Beam angles	/0B	/0B
LED manufacturer	NICHIA	CREE
Colour temperature*	2700K / 3000K / 4000K / 5000K	2200K
Current	350mA	500mA
LED power (Max)	4.2W (5W**)	3.2W (3.5W**)
Delivered lumens (L <sub>100</sub> )***	147	76
CRI (Typ)	85	90
Forward voltage (V <sub>100</sub> )	14V	9V
Colour consistency	2 SCDM	3 SCDM
Peak intensity	1271 cd	505 cd
LED Lumens	840	623
LOR	0.33	0.18
TM30	RF86	RG98
LED lifetime	L90B5 at 90,000hrs	RF90
Applications		RG102

These values are based around a LD170-E3-500-LW30 -NB & LD170-F1-500-LW22-MSB

\*Lumen output data applies to all colour temperatures

\*\*indicates the nominal power for the LED run at that particular current and includes losses associated with using an 85% efficient driver

\*\*\*lumen output indicated is without the glare shield. Allow 30% less with the /GS glare shield.

## MECHANICAL

Ambient temperature	-20° to 55° (350mA) or -20° to 45° (500mA)
Glass	6mm thick toughened glass with black ceramic screen print
Materials	Stainless steel bezel, anodised aluminium body
Weight of product	0.52kg
IP rating	IP67
IK rating	IK08
Wiring	In-series constant current wiring (pre-wired with 2 core cable at a length of 250mm)



## AVAILABLE FINISHES

*Please refer to our finishes guide for full details*



### 316 STAINLESS STEEL

- > Marine grade 316 Steel
- > Standard machined finish
- > Extremely durable
- > Passivation recommended for marine environments to further prevent corrosion and build up of brown stains caused by oxidation
- > Interior & exterior use



### POLISHED & PASSIVATED 316 STAINLESS STEEL

- > Marine grade 316 Steel
- > Pristine mirror like finish
- > Extremely durable
- > Passivated to extensively prolong resistance to corrosion and brown stains caused by oxidation in marine environments
- > Interior & exterior use



### MACHINED BRASS

- > Solid CZ121 Brass
- > Standard machined finish
- > Corrosion resistance rated fair to excellent
- > Please note a natural green/brown patination layer will form after long term exposure to the elements, the extent of this discolouration will be dependant on its location.
- > Interior & exterior use



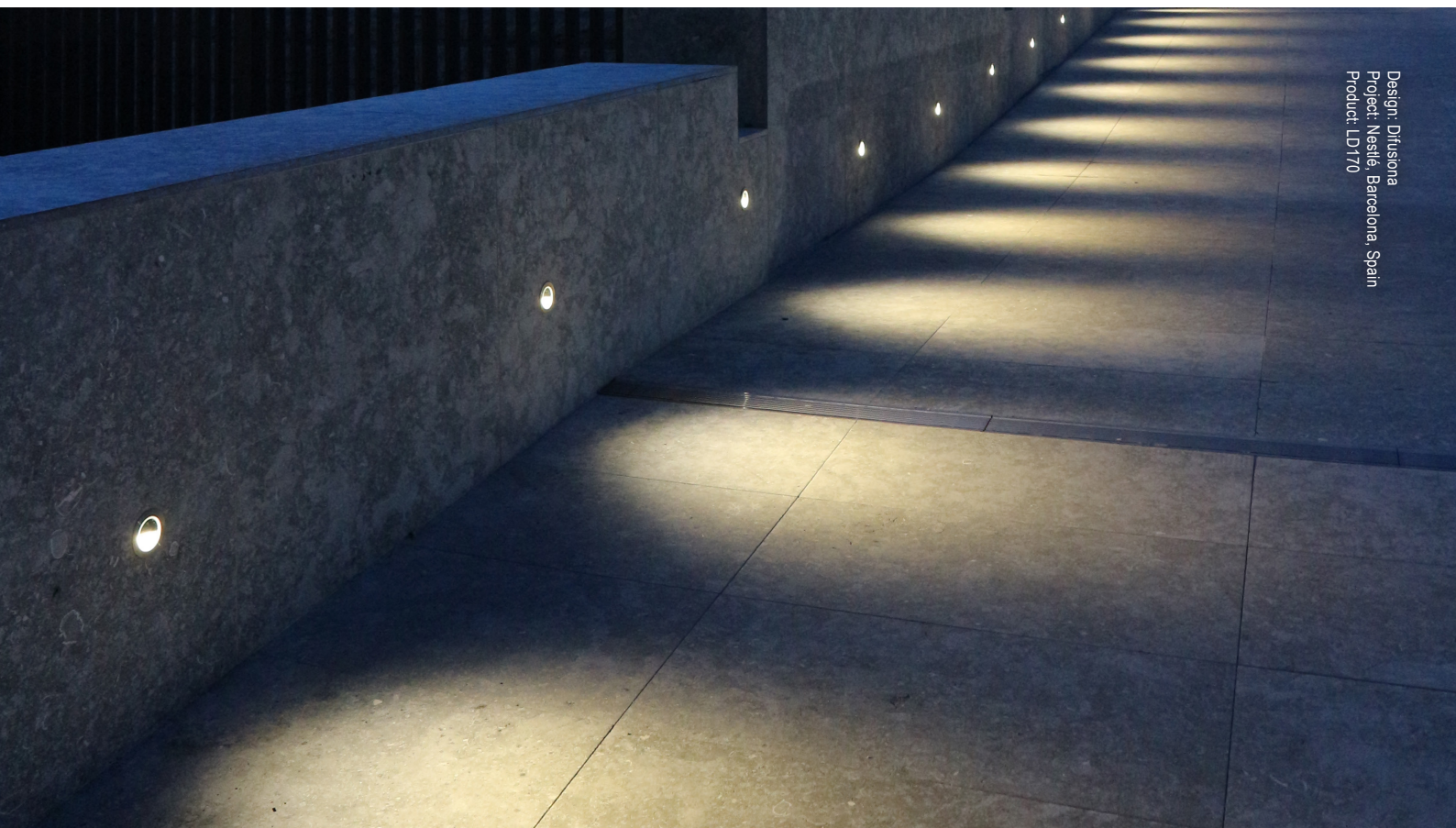
### FLAMED SOLID BRONZE

- > Solid Bronze
- > Hand finished Flamed Bronze unique to LightGraphix
- > Extremely durable with very high corrosion resistance
- > Please note a natural dark patination layer will form after long term exposure to the elements, the extent of this discolouration will be dependant on its location.
- > Interior & exterior use



### PAINT FINISH

- > Matt Black, Matt White, and other RAL colours available
- > Not recommended for footlights in high traffic areas
- > Interior & exterior use



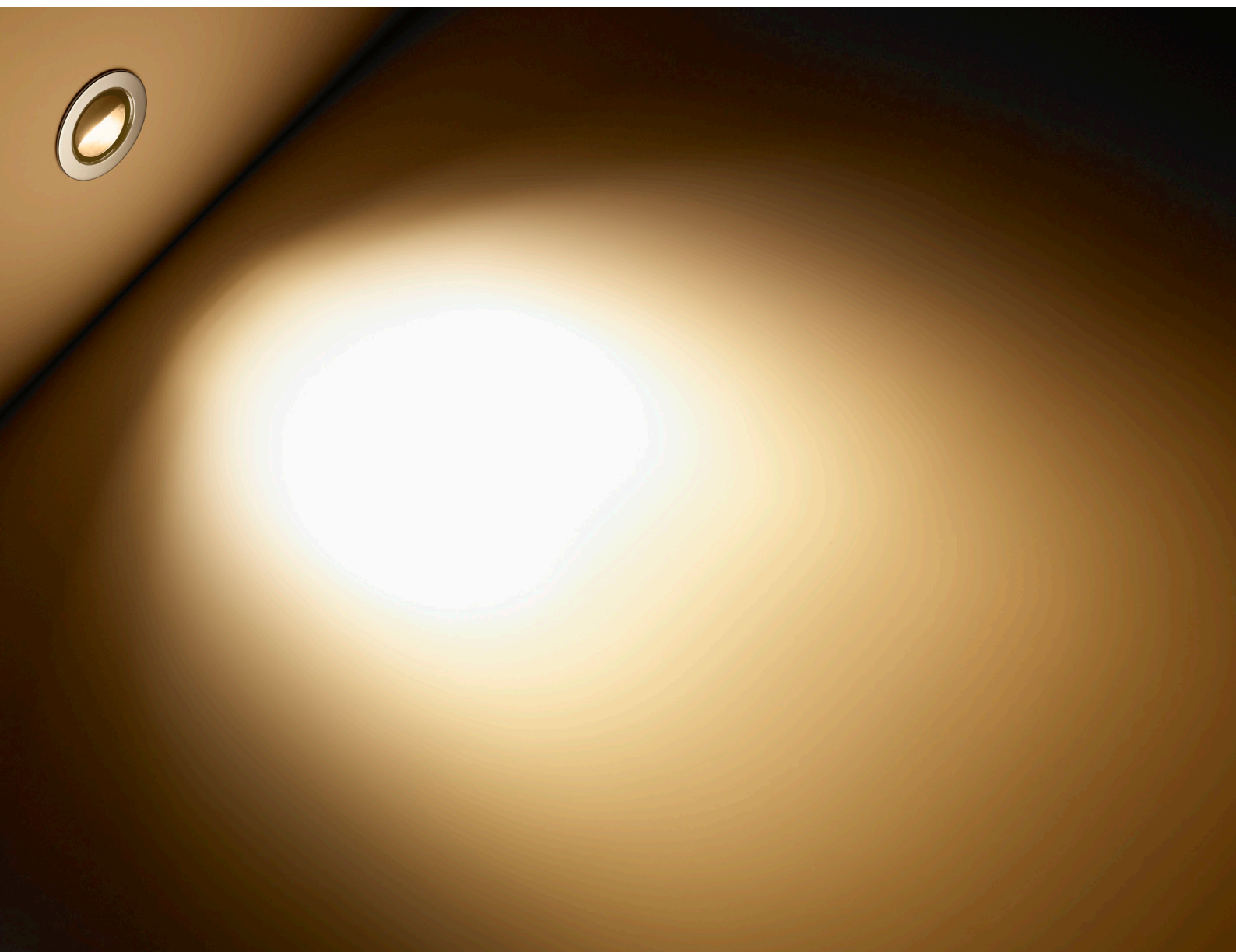
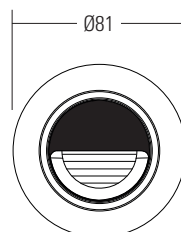
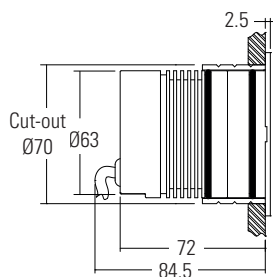
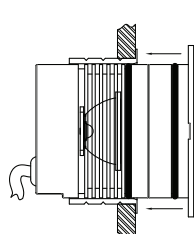
Design: Difusora  
Project: Neslé, Barcelona, Spain  
Product: LD170

## DIMENSIONS AND FIXING ACCESSORIES

*Dimensions in mm*

### /484S First fix sleeve

The fitting should be specified with a /484S first fix sleeve; this is bonded into the mounting surface first. It is secured into the sleeve by two O-rings on the body. When pushed into the sleeve it creates a watertight seal.



## ORDER CODES & OPTIONS

Example: LD170-E3-500 / LW30 / Stainless Steel

Light Engine & Drive Current

LED Colour

Finish

Fixing accessories

Product / / /



E3

5W LED at 350mA	LD170-E3-350
7W LED at 500mA	LD170-E3-500

Extra Warm White (2700K)	/LW27
Warm White (3000K)	/LW30
White (4000K) - on request	/LW40
Cool White (5000K)	/LW50



316 Stainless Steel



/484S



F1

3.5W LED at 350mA	LD170-F1-350
5W LED at 500mA	LD170-F1-500

Super Warm White (2200K)	/LW22
--------------------------	-------



Polished & Passivated  
316 Stainless Steel  
(for marine environments)



Flamed Solid Bronze



Machined Brass



Paint Finish - Black  
(RAL 9005)



Paint Finish - White  
(RAL 9016)



Paint Finish - RAL