

LD36 HIGH-POWER INTERIOR LED LINEAR WALL GRAZER



Offering superb continuous wall washing capabilities from a very compact product, LD36 provides the flexibility to create a range of lit effects in various install applications. From coffer details to seamless shadow free curves, lengths are customisable up to 2100mm and can be specified in wet or dry interior environments, with an optional anti-glare louvre to ensure visual comfort. LD36 features an anodised aluminium body, high-power LED and ultra efficient optics, to deliver excellent beam spread, shape and thermal management.

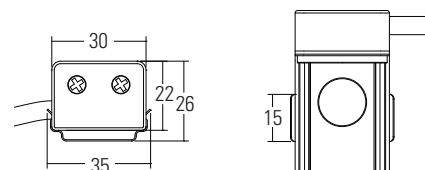
KEY FEATURES

- > Linear C1 engine with NICHIA LED delivering up to 3760lm
- > Compact design with customised lengths up to 2100mm and LED spacings of 50mm, 75mm and 100mm
- > High efficiency optics specially designed for LightGraphix, guarantee excellent beam spread and shape
- > LED spacing maintained across lengths to ensure no dark spots
- > Short pieces can be interlinked to accommodate curves
- > Optional black anti-glare louvre available to reduce glare and improve visual comfort
- > 4 fixing options, including a mini adjustable bracket, ideal for coffer details
- > Aluminium extrusion, anodised to a thickness of 25 microns and available in silver or black
- > For interior wet environments
- > Cost effective alternative to using a linked system for an entire project
- > Switched, 0-10V, Casambi, DMX, DALI and Mains dimmable drivers available



DIMENSIONS

Dimensions in mm

For fitting dimensions please go to page 4.



WHITE LED ENGINE SPECIFICATION

Engine	 Linear C1	
Beam angles	12°, 31°, 48°, 12° x 36°, 15° x 60°	
LED manufacturer	NICHIA	
Colour temperature	2200K / 2700K / 3000K / 4000K / 5000K	
Current	350mA	500mA
LED power (Max)**	1.2W	1.7W
Forward voltage (V ₁₀₀)	3V	3.2V
Delivered lumens (L ₁₀₀)*		
50mm spacing	2160	2820
75mm spacing	1436	1875
100mm spacing	1080	1410
Lumens per circuit watt	90	83
CRI (Typ)	93	
Colour consistency	2SCDM	
Peak intensity	20,806 cd	
LED lumens (at max output)	206lm	
LOR	0.94	
TM30	RF93	RG99
LED lifetime	L90B5 at 90,000hrs	
Applications		

This data is based on LD36-C1-500-LW30-NB

*Lumen output data applies to all colour temperatures

**Indicates the nominal power for the LED run at that particular current and includes losses associated with using an 85% efficient driver

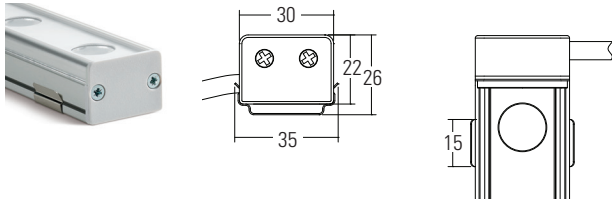
MECHANICAL

Ambient temperature	-20° to 45° (350mA) or -20° to 35° (500mA)
Glass	PMMA acrylic
Materials	Silver or black anodised aluminium body, ABS end caps
IP rating	IP40 or IP54 available for interior use. For exterior use please use LD38.
Wiring	In-series constant current wiring. Pre-wired cable at a length of 2m which can be specified up to 10m at an extra cost

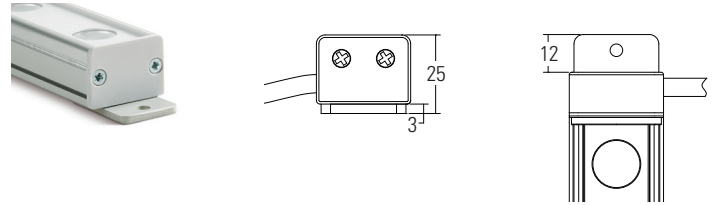
DIMENSIONS & FIXING OPTIONS

Dimensions in mm

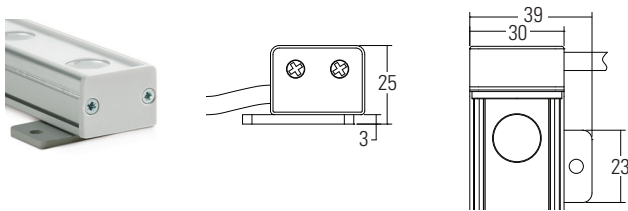
/SC Spring clip



/BEM Bracket end mounting (max 1200mm length)

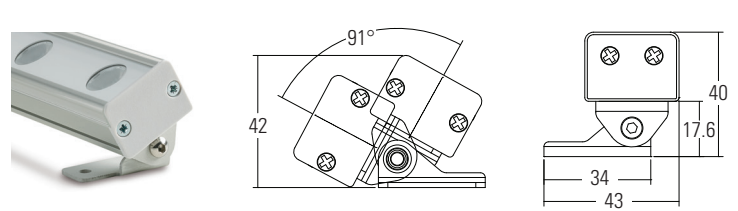


/BSM Bracket side mounting



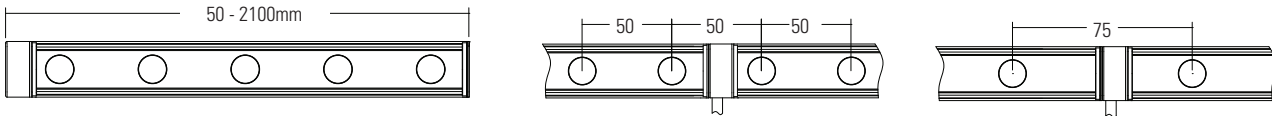
/ABM Adjustable bracket mounting

Cable entry is from the side as standard. With an adjustable brackets it is rear cable entry.



Custom made lengths

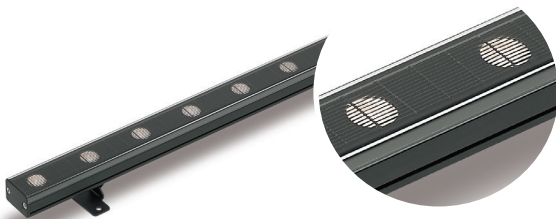
50mm, 75mm and 100mm LED spacing is maintained over multiple lengths.



ACCESSORIES

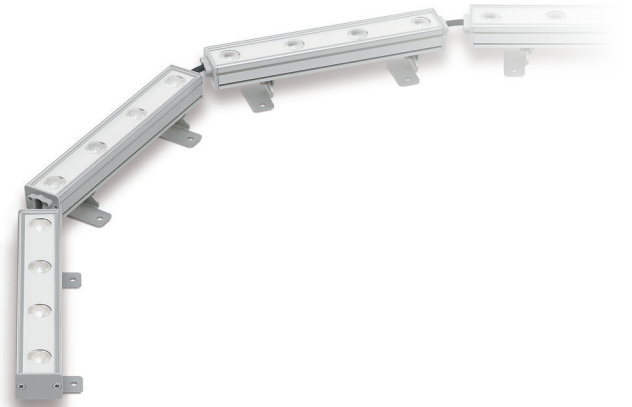
/GL36

Optional anti-glare louvre can be specified for reduced glare. Please note this is only supplied in a black finish.



CURVE APPLICATIONS

To accommodate curved architecture, LD36 can be specified in small sections depending on the radius. These are hard wired together so that the LED spacing is maintained, ensuring no shadows.




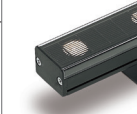

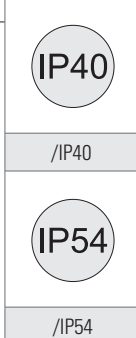




ORDER CODES & OPTIONS

Example: LD36-C1-500 / LW30 / 50 / OB / White / ABM / IP40 / GL36 / 1200mm

Light Engine & Drive Current	LED Colour	LED Spacing	Beam Angle	Finish	Accessories	Fixing	IP Rating	Length (Up to 2100mm)
LD36 -	/	/	/	/	/	/	/	/

WHITE LED ENGINES

 **LINEAR C1 ENGINE**

1.2W LED at 350mA	LD36-C1-350	Super Warm White (2200K)	/LW22	50mm /50	12° Narrow spot /NB	 Silver Anodised (White Lens cover)	 /GL36	 /SC	
1.7W LED at 500mA	LD36-C1-500	Extra Warm White (2700K)	/LW27	75mm /75	31° Medium /MB				
		Warm White (3000K)	/LW30	100mm /100	48° Wide /WB	 Black (End caps, lens cover and extrusion all black)	 /BEM		
		White (4000K) - on request	/LW40		12° x 36° Oval Beam /OB				 /BSM
		Cool White (5000K)	/LW50		15° x 60° Extra Oval Beam /EOB				

Drivers
 Use with 350mA & 500mA constant current LED drivers
 We have a range of dimmable LED drivers including DMX and DALI compatible. Please see the downloads section on our website.