

# LD42, LD42W & LD42A



Low Glare Miniature LED Recessed Wall Light

Data sheet - Page 1



Design: Sian Baxter Lighting Design Project: Private Residence Product: LD42A

LD42 is a miniature recessed LED wall light, ideal for discreet lighting of steps and pathways. It is a high quality fitting that can be used for interior or exterior applications, including yachts. Low glare is achieved by a recessed lens assembly set back into a black anodised body. Optional half moon glare shield and 20° tilt film further reduce glare.

## Key Features

- Very minimal depth and bezel diameter
- High power for its size
- High efficiency optics specially designed for LightGraphix guarantee excellent beam spread and shape
- Recessed LED position for reduced glare
- Glass fixed with hidden gasket, so no unsightly glue line
- Optional glare shield (LD42W) and 20° tilt film (LD42A) options available
- Hidden fixing options include spring clips or O-rings and the /480 first fix sleeve
- For a 2.4W version please see our LD45 or LD46
- Not designed for permanent submersion, please use our LD242A, LD41, and LD60
- Available with Switch, 0-10V, DMX, Dali or Mains dimmable drivers

## Specification

### Applications



### Beam Angles

12°, 31°, 48°, 36° x 12°

### LED type

1 x Cree XPG2

### Colour temperature

2700K\* / 3000K

5000K

### Drive Current (mA)

350

500

350

500

### LED power\*\* (W)

1.2W

1.7W

1.2W

1.7W

### CRI (typical)

93

93

75

75

### Forward voltage (V)<sub>100</sub>

3.0V

3.2V

3.0V

3.2V

### Delivered lumens (L<sub>100</sub>)\*\*\*

88

120

107

146

### Lumens per circuit watt

73

71

89

86

### LED lifetime (to 70% lumen maintenance)

50,000hrs at a max ambient temperature of 35°C (if specifying fitting in ambient temperatures of up to 45°C run at 350mA max, LD42-350)

### Materials

Hard anodised aluminium body with machined stainless steel bezel

### Glass

3.3mm thick borosilicate

### Wiring

Comes pre-wired with 2 core 100mm lead, can be specified with up to 10m at extra cost

### IP rating

IP68 for up to 1 week (for permanent submersion applications use our LD242A, LD41, LD60)

\*2700K lumen output is 12% lower than the 3000K figure listed

4000K lumen output is 14% higher than the 3000K figure listed (80 CRI)

\*\*LED wattage includes losses associated with using an 85% efficient driver

\*\*\*LD42A and LD42W lumen output will be 40% less due to the glare shield

## LD42



## LD42W, LD42A



# LD42, LD42W & LD42A

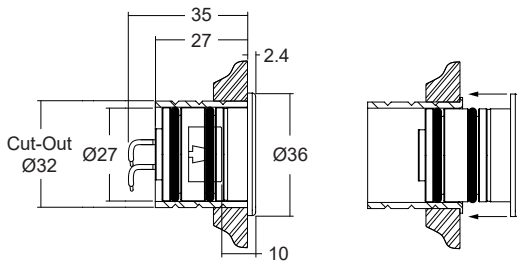


Low Glare Miniature LED Recessed Wall Light

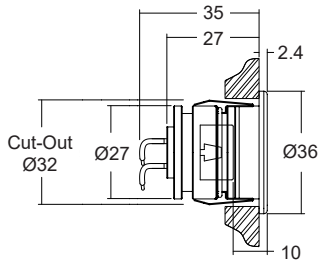
Data sheet - Page 2

## Dimensions and fixing options

**/480** - O-rings and sleeve. A more robust and water-tight method of fixing



**/SC** - Spring clip fixing



Design: Sian Baxter Lighting Design Project: Private Residence Product: LD42W

# LD42, LD42W & LD42A

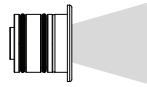


Low Glare Miniature LED Recessed Wall Light

Data sheet - Page 3

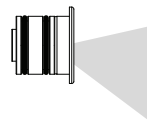
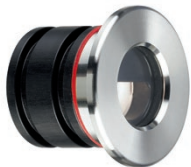
## Body and light output options

### LD42



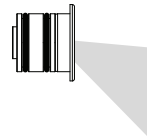
Circular aperture with lens and LED assembly recessed into the body by 10mm.

### LD42W



Body has a machined half moon in front of the lens to reduce glare. Please note that the oval lens can not be used in this or the LD42A.

### LD42A



Same as the LD42W but with an integral 25° refractor film which angles the light down onto the surface to be lit.

## Photometrics

Photometric files are included in the design packs which can be downloaded from the LD42 and LD42A/LD42W product pages on the website.

## Order Codes and Options

Product code	LED colour	Lens angle	Bezel finish	Fixing
LD42 -350 -500	<input type="text"/>	<input type="text"/>	<input type="text"/>	<input type="text"/>

Example: LD42A-350 / LW30 / MB / Polished Stainless / 480

### Product codes with output options

350mA 1.2W	LD42-350 LD42W-350 LD42A-350	500mA 1.7W	LD42-500 LD42W-500 LD42A-500
------------	------------------------------------	------------	------------------------------------

### LED colour options

Extra warm white (2700K)	/LW27
Warm white (3000K)	/LW30
White (4000K) - on request	/LW40
Cool white (5000K)	/LW50
Blue	/LB
Green	/LG
Red	/LR
Amber	/LA

### Suffix

### Beam / lens angle options

12° narrow spot	/NB
31° medium	/MB
48° wide	/WB
36° x 12° oval beam (only available with the LD42)	/OB

### Bezel finish options

Stainless steel 316
Paint finish white / black / RAL
Polished and passivated stainless steel (for marine environments)
Antique Bronze (flamed solid bronze)

### Fixing options

Spring clips	/SC
First fix sleeve	/480

### Use with 350mA or 500mA constant current LED drivers

We have a wide range of dimmable LED drivers, 0-10V, DMX, DALI and Mains dimmable. Please see the downloads section on our website:  
 To run 1-14 LD42-350 in series use a TXDEL350D (0-10V dimmable)  
 To run 1-14 LD42-500 in series use a TXDEL500D (0-10V dimmable)



LD42W with 31° medium beam installed 80mm from the floor