

LD95



Miniature Floor or Ceiling Mounted Spotlight

Data sheet - Page 1

LD95 is a miniature floor or ceiling mounted spotlight. It has been designed for applications where a recessed fitting cannot be installed, and a discreet, non obtrusive solution is required. It features a deep recessed LED and optional glare shield, removing the need for a large cowl. Using the latest in LED technology, with a typical 93 CRI in 3000K warm white, the LD95 offers an excellent diffused beam shape from a range of optics. The LD95 incorporates an integral anti-wicking barrier for added protection and is available with a choice of switch, 0-10V, DMX, Dali or mains dimmable remote drivers.

Key Features

- Miniature design with high output LED
- Excellent diffused beam shape from a range of optics
- Optional glare shield accessory
- Typical 93 CRI in 3000K warm white
- Integral anti-wicking barrier provides increased protection against moisture
- Range of finishes available
- Variable output options
- Machined from a solid billet of aluminium
- Reverse polarity protection
- Available with Switch, 0-10V, DMX, Dali or Mains dimmable drivers

Specification

Applications



Beam Angles

12°, 31°, 48°, 12° x 36°

LED type

1 x C1 Engine with NICHIA LED

Colour temperature

2200K / 2700K / 3000K / 4000K / 5000K

Drive Current (mA)

350 500 700

LED power* (W)

1.2W 1.7W 2.4W

CRI (typical)

93 93 93

Forward voltage (V)₁₀₀

3.0V 3.2V 3.4V

Delivered lumens** (L₁₀₀)

106 138 177

Lumens per circuit watt

88 81 74

LED lifetime

L90B5 at 90,000hrs

Materials

Machined and iridited aluminium body, with a black anodised bezel

Glass

1mm thick low iron glass

Wiring

Comes pre-wired with a 1m lead, can be specified with up to 10m at extra cost

IP rating

IP66

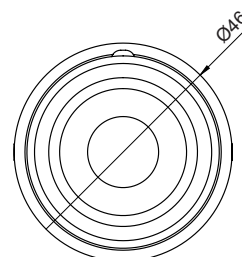
*LED wattage includes losses associated with using an 85% efficient driver

** Lumen output data applies to all colour temperatures.

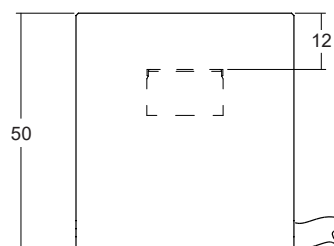


Dimensions

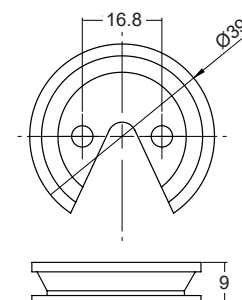
Top View



Side View



Mounting plate



LD95

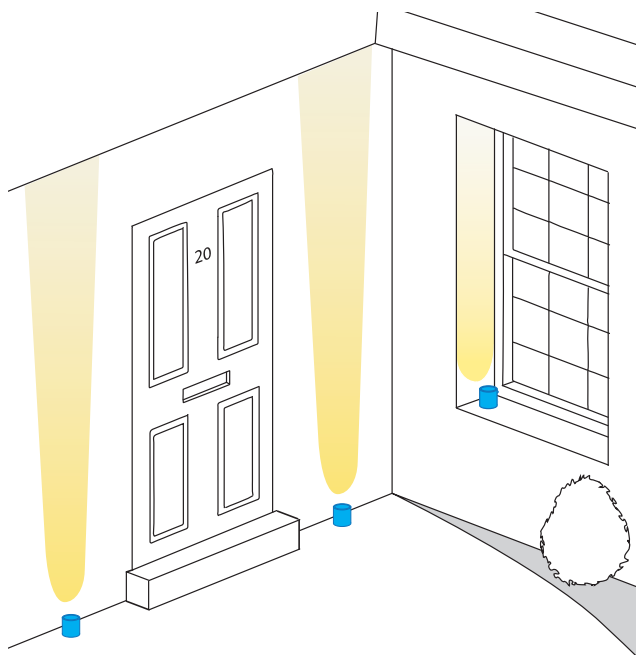
Miniature Floor or Ceiling Mounted Spotlight

Data sheet - Page 2



Applications

LD95 is incredibly versatile, allowing it to be used in a variety of applications from lighting window reveals to wall and floor washing.



Accessories

/GS - Glare shield

An optional glare shield is available for the LD95 to further reduce glare from the LED and optic. This does not reduce the light on the lit surface (wall) but will cut out some light onto the ceiling or floor.



Cone Diagrams

Cone diagrams below are based on a 3000K LED run at maximum output 700mA.

Narrow Beam

700mA using a 12° optic

Distance (m)	Luminance (lx)
0.5	4743
1.0	1186
1.5	527
2.0	296
2.5	190
3.0	132

Cone Width (m)

Medium Beam

700mA using a 31° optic

Distance (m)	Luminance (lx)
0.5	2199
1.0	550
1.5	244
2.0	137
2.5	88
3.0	61

Cone Width (m)

Wide Beam

700mA using a 48° optic

Distance (m)	Luminance (lx)
0.5	1169
1.0	292
1.5	130
2.0	73
2.5	47
3.0	32

Cone Width (m)

Oval Beam

700mA using a 12° x 36° optic

Distance (m)	Luminance (lx)
0.5	2944
1.0	736
1.5	327
2.0	184
2.5	118
3.0	82

Cone Width (m)

Finish Options

A range of paint finishes are available which are suitable for exterior applications. Please refer to our finished guide for more information.

Paint Finish White



Paint Finish Black



Paint Finish Antique Bronze



Photometric files (LDT) are included in the design pack which can be downloaded from the LD95 product page on the website.

LD95

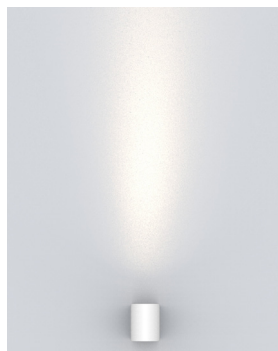
Miniature Floor or Ceiling Mounted Spotlight

Data sheet - Page 3

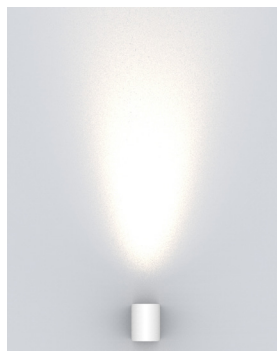


Lens Options

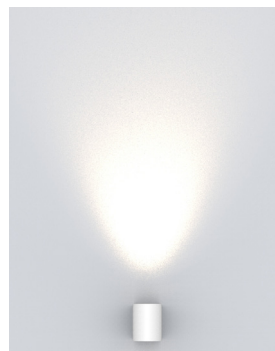
/NB - 12° narrow



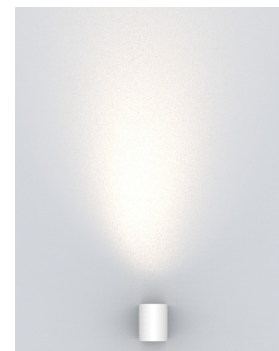
/MB - 31° medium



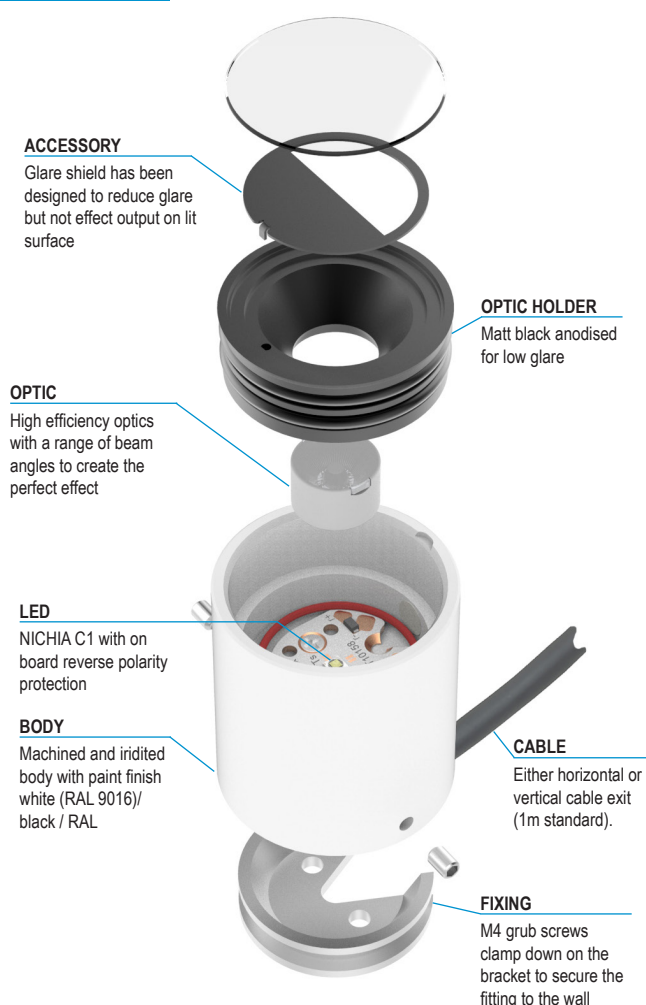
/WB - 48° wide



/OB - 36° x 12° oval



Product Parts



Order Codes and Options

Product code	LED colour	Lens angle	Accessory	Finish
LD95-C1-350 - 500 - 700				

Example: LD95-C1-700 / LW30 / MB / GS / White

Product codes with output options

1.2W LED at 350mA	LD95-C1-350
1.7W LED at 500mA	LD95-C1-500
2.4W LED at 700mA	LD95-C1-700

LED colour options

Super Warm White (2200K)	/LW22
Extra Warm White (2700K)	/LW27
Warm White (3000K)	/LW30
White (4000K)	/LW40
Cool White (5000K)	/LW50

*Other LED colour temperatures are available. Please speak to a member of our sales team.

Beam / lens angle options

12° narrow spot	/NB
31° medium	/MB
48° wide	/WB
12° x 36° oval	/OB

Accessory

Glare shield (GS56T)	/GS
----------------------	-----

Finish options

Paint finish silver / black / white (RAL 9016) / antique bronze / satin antique brass / satin brass / RAL finish

Use with 350mA, 500mA and 700mA constant current LED drivers

We have a wide range of dimmable LED drivers, 0-10V, DMX, DALI and Mains dimmable. Please see the downloads section on our website:

To run 1-14 LD95-C1-350 in series use a TXDEL350D (0-10V dimmable)

To run 1-14 LD95-C1-500 in series use a TXDEL500D (0-10V dimmable)

To run 1-13 LD95-C1-700 in series use a TXDEL700D (0-10V dimmable)