

# LD97



## Miniature Wall Mounted Single LED Up or Down Wall Washer

Data sheet - Page 1

The LD97 is a miniature surface mounted LED wall light. Minimal design allows it to blend seamlessly into most project styles, and fit into the smallest of details. A choice of beam angles and LED colours offers the designer a range of uses, which include window reveal lighting, wall washing and path illumination. LD97 has been designed to withstand the harshest of conditions. The small but very robust body is machined from a solid billet of aluminium, and incorporates an integral anti-wicking barrier for added protection. The fitting is available with a choice of switch, 0-10V, DMX, Dali or mains dimmable remote drivers.

### Key Features

- Ideal product to light window reveals, wall wash, and create interesting light patterns
- Reverse polarity protection
- Excellent diffused beam shape from a range of optics
- Optional glare shield accessory
- Can be used as an uplighter or downlighter
- Optimal spacing from mounting surface
- Typical 93 CRI in 3000K warm white
- Integral anti-wicking barrier provides increased protection against moisture
- Large range of paint finishes available
- Variable output options
- Machined from a solid billet of aluminium
- Available with remote Switch, 0-10V, DMX, Dali or Mains dimmable drivers



### Specification

#### Applications



#### Beam Angles

12°, 31°, 48°, 36° x 12°

#### LED type

1 x Cree XPG2

#### Colour temperature

2700K\*\* / 3000K | 5000K

Drive Current (mA)	350	500	700	350	500	700
LED power* (W)	1.2W	1.7W	2.4W	1.2W	1.7W	2.4W
CRI (typical)	93	93	93	80	80	80
Forward voltage (V) <sub>100</sub>	3.0V	3.2V	3.4V	3.0V	3.2V	3.4V
Delivered lumens** (L <sub>100</sub> )	90	123	164	109	149	200
Lumens per circuit watt	75	72	68	91	88	83

LED lifetime (to 70% lumen maintenance) 50,000hrs at a max ambient temperature of 35°C (if specifying fitting in ambient temperatures of up to 45°C run at 500mA max, LD97-500)

#### Materials

Machined and iridited aluminium body, with a black anodised bezel

#### Glass

1mm thick low iron glass

#### Wiring

Comes pre-wired with 2 single 100mm leads, can be specified with up to 10m at extra cost

#### IP rating

IP66

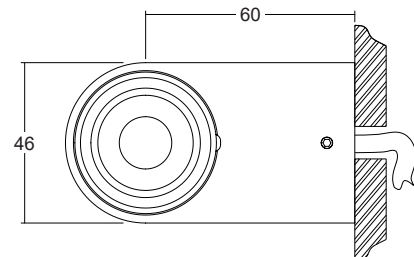
\*LED wattage includes losses associated with using an 85% efficient driver

\*\* 2700K lumen output is 12% lower than the 3000K figure listed

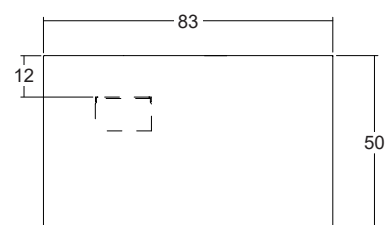
4000K lumen output is 14% higher than the 3000K figure listed (80 CRI)

### Dimensions

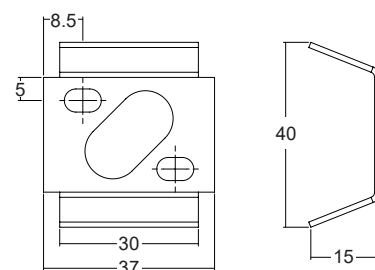
#### Top View



#### Side View



#### Bracket



# LD97

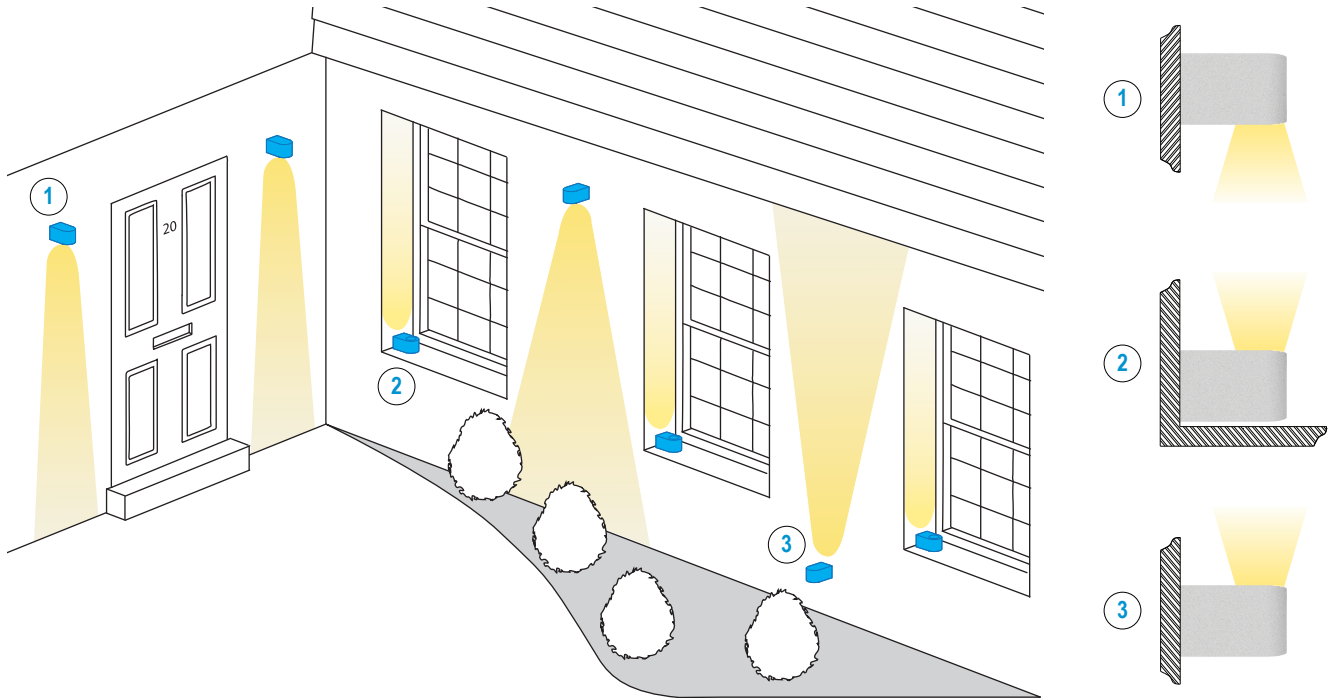


Miniature Wall Mounted Single LED Up or Down Wall Washer

Data sheet - Page 2

## Applications

LD97 is incredibly versatile, allowing it to be used in a variety of applications from lighting window reveals to wall washing and path lighting.



## Accessories

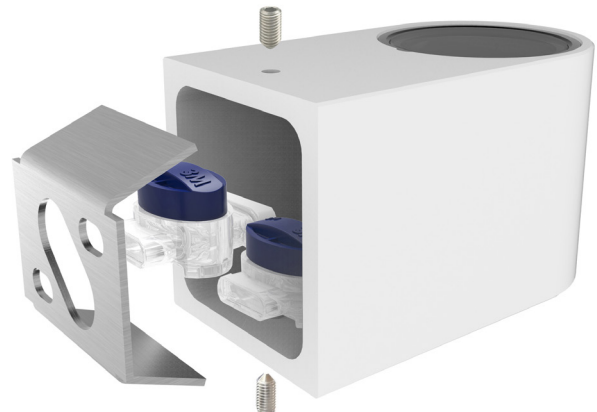
/GS - Glare shield

An optional glare shield is available for the LD97 to further reduce glare from the LED and optic. This does not reduce the light on the lit surface (wall) but will cut out some light onto the ceiling or floor.



## Connections

The LD97 has been designed with enough room inside for a connection to be made to a first fix cable, and the remote drivers. It is supplied with two 3M Scotchlok™ connectors, which are IP rated for exterior waterproof applications.



# LD97



## Miniature Wall Mounted Single LED Up or Down Wall Washer

Data sheet - Page 3

### Cone Diagrams

Cone diagrams below are based on a 3000K LED run at maximum output 700mA.

#### Narrow Beam

700mA using a 12° optic

Distance (m)	Luminance (lx)	
0.5	0.17	4743
1.0	0.35	1186
1.5	0.52	527
2.0	0.70	296
2.5	0.87	190
3.0	1.05	132

Cone Width (m)

#### Medium Beam

700mA using a 31° optic

Distance (m)	Luminance (lx)	
0.5	0.27	2199
1.0	0.55	550
1.5	0.82	244
2.0	1.09	137
2.5	1.37	88
3.0	1.64	61

Cone Width (m)

#### Wide Beam

700mA using a 48° optic

Distance (m)	Luminance (lx)	
0.5	0.46	1169
1.0	0.91	292
1.5	1.37	130
2.0	1.82	73
2.5	2.28	47
3.0	2.73	32

Cone Width (m)

#### Oval Beam

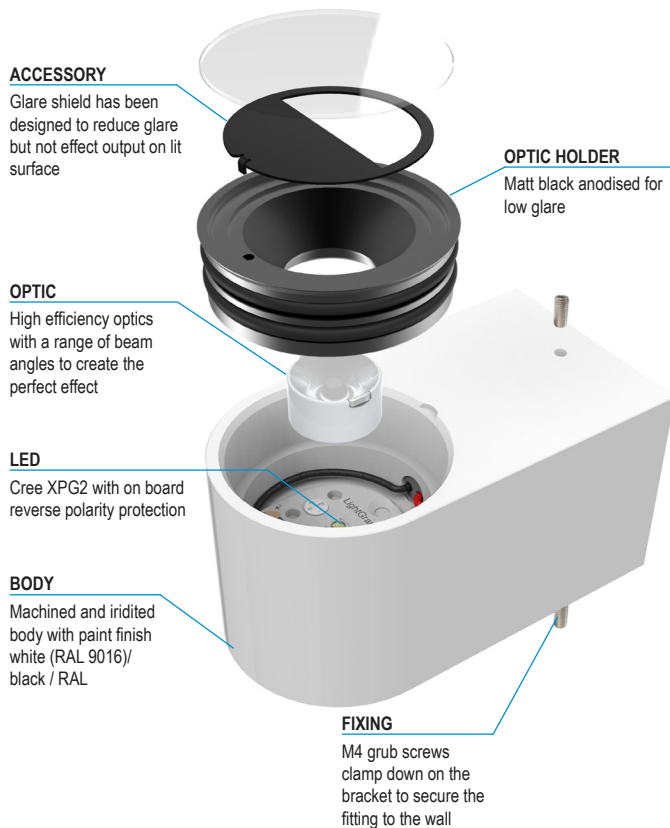
700mA using a 36°x12° optic

Distance (m)	Luminance (lx)	
0.5	0.26 / 0.16	2944
1.0	0.59 / 0.33	736
1.5	0.88 / 0.49	327
2.0	1.18 / 0.66	184
2.5	1.47 / 0.82	118
3.0	1.77 / 0.98	82

Cone Width (m)

Photometric files (LDT) are included in the design pack which can be downloaded from the LD97 product page on the website.

### Product Parts



### Order Codes and Options

Product code	LED colour	Beam angle	Accessory	Finish
LD97 - 350 - 500 - 700	<input type="text"/>	<input type="text"/>	<input type="text"/>	<input type="text"/>

Example: LD97-700 / LW30 / MB / GS / White

#### Product codes with output options

1.2W LED at 350mA	LD97-350
1.7W LED at 500mA	LD97-500
2.4W LED at 700mA	LD97-700

#### LED colour options

Super Warm White (2200K)	/LW22
Extra Warm White (2700K)	/LW27
Warm White (3000K)	/LW30
White (4000K)	/LW40
Cool White (5000K)	/LW50

\*Other LED colour temperatures are available. Please speak to a member of our sales team.

#### Beam / lens angle options

12° narrow spot	/NB
31° medium	/MB
48° wide	/WB
36° x 12° oval	/OB

#### Accessory

Glare shield (GS56T)	/GS
----------------------	-----

#### Finish options

Paint finish silver / black / white (RAL 9016) / antique bronze / satin antique brass / satin brass / RAL finish

#### Use with 350mA, 500mA and 700mA constant current LED drivers

We have a wide range of dimmable LED drivers, 0-10V, DMX, DALI and Mains dimmable.

Please see the downloads section on our website: (drivers can be located up to 40m)

To run 1-14 LD97-350 in series use a TXDEL350D (0-10V dimmable)

To run 1-14 LD97-500 in series use a TXDEL500D (0-10V dimmable)

To run 1-13 LD97-700 in series use a TXDEL700D (0-10V dimmable)