

WARNING: DO NOT USE NORMAL LOW VOLTAGE TRANSFORMERS WITH LEDS.

All LED fittings are tested before dispatch. It is not necessary to check them on site. Do not power up until fittings are wired correctly.

INSTRUCTION LEAFLET




LD34Mi/CH

High Power Linear In-ground LED Wall Grazer

This product should be installed by a qualified electrician in accordance with all current, local legislation. For the UK, the current edition of the IEE Wiring Regulations and European Standard IEC 60364.

SPECIFICATION

LED recessed luminaires are class III  for Safety Extra Low Voltage supply  **700mA** constant current supply.

Suitable for mounting on normally flammable surfaces. 

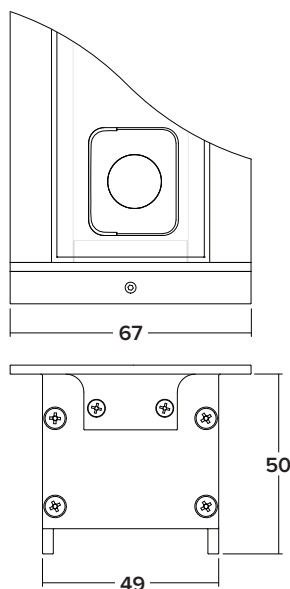
This fitting is **IP67** rated.

Lumen Maintenance: 50,000 hours L70 at Max Ambient of 35°C.

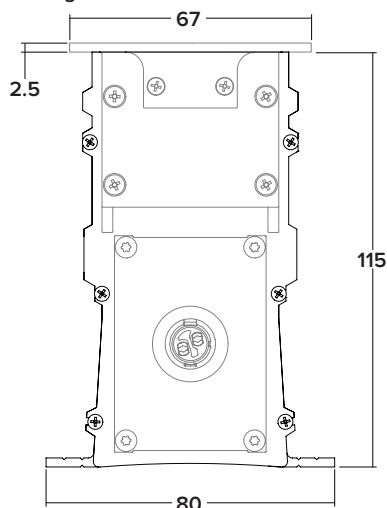
LD34Mi is available in various power outputs options

Product & LED output code	Power Output
LD34Mi - 700	700mA 2.4W (per LED)

DIMENSIONS



/CH Concrete Housing



INITIAL INSTALLATION CHECK LIST

Be sure to run through the below check list, failure to do so may result in incorrect installation or delays.

Check:

- ☐ All relevant concrete housing lengths are on site and ready for install.
- ☐ The fittings match the corresponding concrete housing and driver box.
- ☐ Ensure the correct cable lengths and connectors have been specified.
- ☐ Double check the supply lead provides the correct power output and contains the correct dimming/signal cable if required.



WARNING

Do not power up LED or driver until all work is completed.

INSTALLATION INSTRUCTIONS
& WIRING INFORMATION
ON NEXT PAGE

WARNING: DO NOT USE NORMAL LOW VOLTAGE TRANSFORMERS WITH LEDs.

All LED fittings are tested before dispatch. It is not necessary to check them on site. Do not power up until fittings are wired correctly.

INSTRUCTION LEAFLET

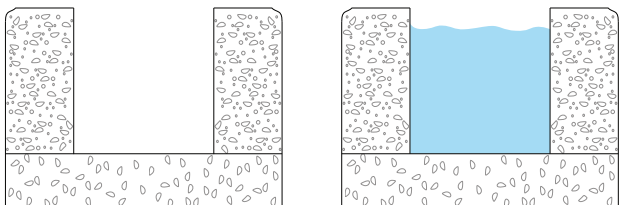


LD34Mi/CH

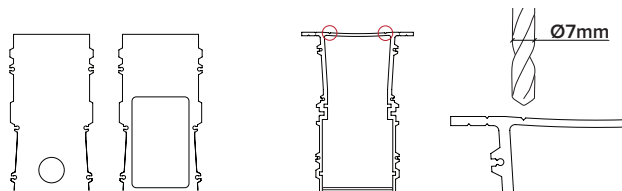
High Power Linear In-ground LED Wall Grazer

This product should be installed by a qualified electrician in accordance with all current, local legislation. For the UK, the current edition of the IEE Wiring Regulations and European Standard IEC 60364.

- 1** Ground preparation. Regardless of the mounting surface the area must have adequate drainage. A volume of water equal to the volume of the mounting channel must drain away within 30 minutes.

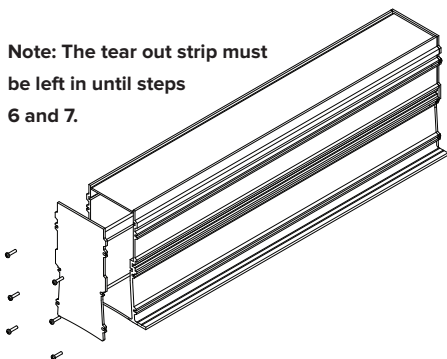


- 2** Drill drainage holes (4 per metre) using the guide grooves on the base of the concrete housing. Also using the template provided prepare the end caps for a gland or conduit (to be supplied by others).

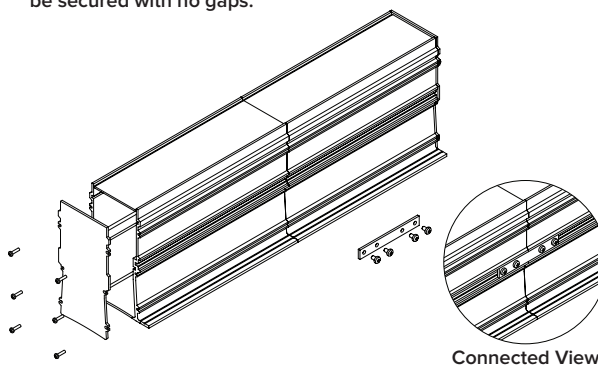


- 3** Single - Assemble the concrete housing using the screws provided.

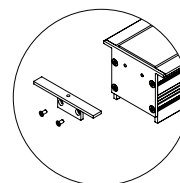
Note: The tear out strip must be left in until steps 6 and 7.



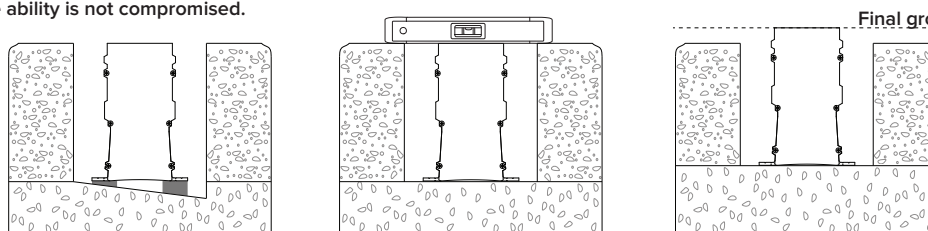
Multiple - Use the connection kit provided. The two sections must be secured with no gaps.



In-Line: If product is to be installed in-line the flange will be supplied separately. Use the screws provided to attach them to the outside of the in-line length.

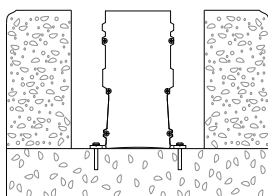


- 4** Place the concrete housing in the prepared channel, this must be level. If the housing requires bolster, ensure it is supported along its entire length and that its drainage ability is not compromised.

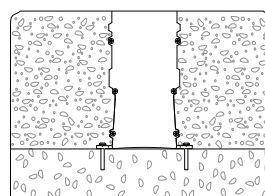


If a secondary surface is going to be used ensure the concrete is offset by the specified material thickness.

- 5** Once placement has been confirmed secure the housing using the flanged base.



- 6** Fill remaining cavity with concrete. When pouring ensure as little material falls into the channel as possible.



WARNING

Do not power up LED or driver until all work is completed.

**INSTALLATION INSTRUCTIONS
& WIRING INFORMATION
ON NEXT PAGE**

WARNING: DO NOT USE NORMAL LOW VOLTAGE TRANSFORMERS WITH LEDS.

All LED fittings are tested before dispatch. It is not necessary to check them on site. Do not power up until fittings are wired correctly.

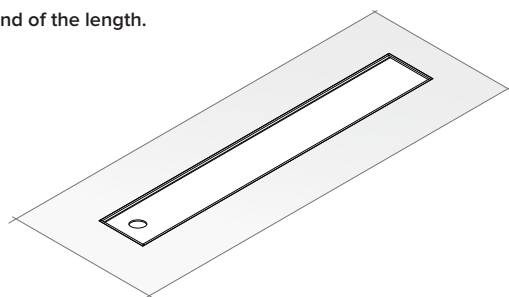
INSTRUCTION LEAFLET



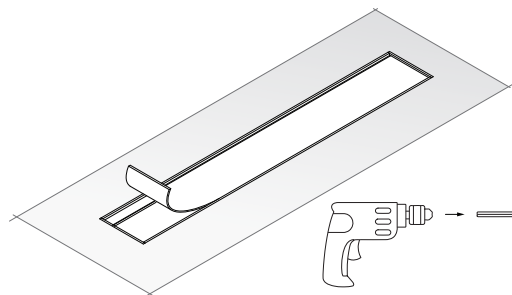
LD34Mi/CH

This product should be installed by a qualified electrician in accordance with all current, local legislation. For the UK, the current edition of the IEE Wiring Regulations and European Standard IEC 60364.

- 7** Once the concrete has set the tear-out strip can be removed. Drill a hole through the centre of the tear-out strip roughly 40mm from the end of the length.



To remove the strip place an allen in the chuck of a drill and use it to peel the tear-out strip away from the housing.



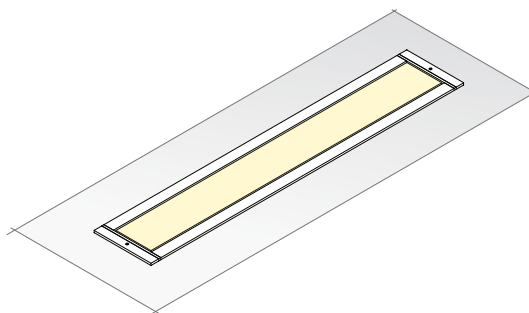
- 8** Once the concrete housing has been installed please refer to the relevant driver as specified on the works order. The LD34Mi is only compatible with the following driver codes:

TX.IPDEL700S & TX.IPDEL700S-E
TX.IPDEL700D & TX.IPDEL700D-E
TX.IPDEL700DALI & TX.IPDEL700DALI-E
TX.IPDEL2S700S & TX.IPDEL2S700S-E
TX.IPDEL2S700D & TX.IPDEL2S700D-E
TX.IPDEL2S700DALI & TX.IPDEL2S700DALI-E

Do NOT use any other driver or system with this product.



- 9** Prior to placing the fitting within the concrete housing ensure all connectors are secure and fully tightened. Once complete and all connections have been double checked the power can be turned on.



WARNING

Do not power up LED or driver until all work is completed.

REMOVAL INSTRUCTIONS
ON NEXT PAGE

IMPORTANT

Make sure that all cables and connections are securely connected before switching on the power. Do not switch on the power source prior to making these connections as this will result in damage to the LED or driver.

If the LEDs do not work upon power up, turn off the power source immediately and check the polarity of the wiring.

MAINTENANCE

CABLE: The external flexible cable of this luminaire can not be replaced; if the cord is damaged, the luminaire shall be destroyed.

LAMPS: The light source in this luminaire is non-replaceable, when the light source reaches its end of life the whole luminaire shall be replaced. Clean with soft cloth and avoid harsh cleaning chemicals.

This leaflet should be issued and retained by the end user.

Page 3/4

WARNING: DO NOT USE NORMAL LOW VOLTAGE TRANSFORMERS WITH LEDS.

All LED fittings are tested before dispatch. It is not necessary to check them on site. Do not power up until fittings are wired correctly.

INSTRUCTION LEAFLET



LD34Mi/CH End Cap Template

This product should be installed by a qualified electrician in accordance with all current, local legislation. For the UK, the current edition of the IEE Wiring Regulations and European Standard IEC 60364.



Ensure the holes drilled for glands or conduits remain within the area highlighted below. Cut around dotted lines and lay over the end cap, the outer edge of the drill must stay in this zone.

