

LD50

LOW GLARE ADJUSTABLE EXTERIOR LED PATH LIGHT



The LD50 low-level path light offers a wide distribution from a very compact fitting, reducing the number of luminaires required to achieve an even floor wash. With two oval beams available, the extra oval beam features an additional 20° tilt film to focus the light out onto the pathway, whilst the head remains horizontal for ultra low glare. The head can be adjusted up to 90° from horizontal to vertical, allowing the fitting to be placed further away from the path. Designed with a hidden cable located at the bottom of its ground spike, the minimal profile of the LD50 seamlessly integrates into its surroundings which can be further enhanced through a wide range of paint finishes.



KEY FEATURES



- > Low-level, very low glare path light with a wide beam distribution
- > Available in a 18° x 37° oval beam and 46° x 80° extra oval beam
- > The extra oval beam features an additional 20° tilt film to focus the wide beam distribution out onto the pathway
- > Wide beam distribution means less products need to be specified to achieve an even floor wash
- > Designed with a hidden cable located at the bottom of the ground spike
- > Friction set head is adjustable up to 90° for placement further away from the path
- > Wide range of wet spray and textured paint finishes available including: White (RAL 9016), Silver anodised, Anthracite Grey (RAL 7016), Black (RAL 9005), Antique Bronze, Satin Antique Brass, Satin Brass, Textured Fir Green (RAL 6009), Textured Mars Bronze (SX350F) or any RAL finish
- > Switched, 0-10V, Casambi, DMX, DALI or Mains dimmable drivers available

DIMENSIONS

For full dimensions please go to page 3.



WHITE LED ENGINE SPECIFICATION

Engine	 C1		
Beam angles	18° x 37°, 46° x 80°		
LED manufacturer	NICHIA		
Colour temperature*	2200K, 2700K, 3000K, 4000K, 5000K		
Current	350mA	500mA	700mA
LED power (Max)	1.1W (1.2W)	1.5W (1.7W)	2.1W (2.4W)
Delivered lumens (L ₁₀₀)	82	108	140
Lumens per circuit watt	78	72	67
CRI (Typ)	93		
Forward voltage (V ₁₀₀)	3.4V		
Colour consistency	2 SCDM		
Peak intensity	111 cd		
LED Lumens	213		
LOR	0.39		
TM30	RF93	RG99	
LED lifetime	L90B5 @ 90,000hrs		
Applications			

These values are based around a LD50-C1-700-LW30-OB

*Lumen output data applies across all colour temperatures.

**Indicates the nominal power for the LED run at that particular current and includes losses associated with using an 85% efficient driver

*** UGR values based on room parameter of 4H 8H, C70 W50 F20

MECHANICAL

Ambient temperature	-20°C to +35°C (500mA/700mA), or -20°C to +45°C (350mA)
Glass	1.1mm thick, low iron glass
Materials	Black hard anodised aluminium body
Weight of product	0.3kg (including ground spike)
IP rating	IP65
Wiring	In-series constant current wiring (pre-wired with 2 core cable at 2000mm - can be specified with up to 10m at an extra cost)

ENVIRONMENTAL

TM65	Available on request
TM66	2.2

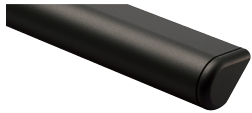
AVAILABLE FINISHES

Please refer to our finishes guide for full details

The LD50 body is machined from aluminium and painted in-house at LightGraphix. Paint finishes are suitable for interior and exterior use on surface mounted products. Our standard colours are below but we can accommodate any RAL request. Please view our full finishes guide online for more information.

WET SPRAY

Wet spray paint offers a fine coating and has a slightly metallic finish. It is suitable for interior, exterior and high-saline environments.



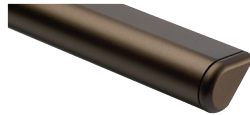
BLACK
(RAL 9005)



WHITE
(RAL 9016)



SILVER ANODISED



ANTIQUE BRONZE



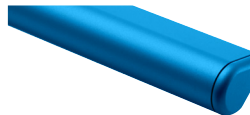
SATIN ANTIQUE BRASS



SATIN BRASS



ANTHRACITE GREY
(RAL 7016)



RAL COLOURS

POWDER COAT

Powder coat paint is suitable for interior and exterior environments.



TEXTURED MARS BRONZE
(SX350F)

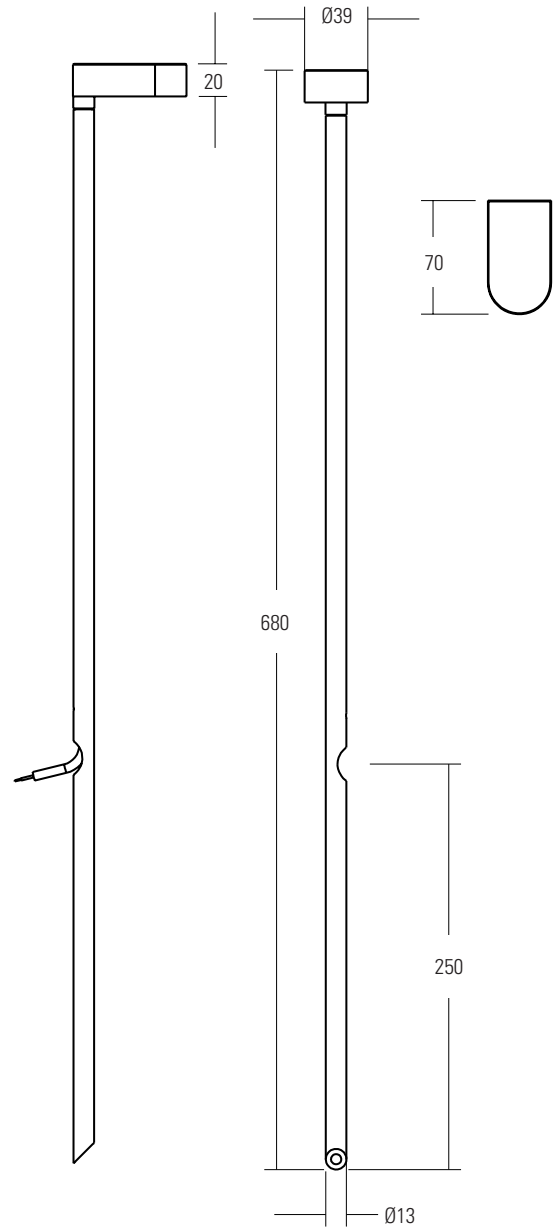


TEXTURED FIR GREEN
(RAL 6009)

MOUNTING OPTIONS AND DIMENSIONS

Dimensions in mm

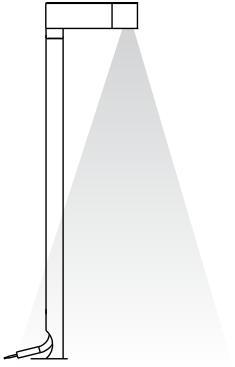
The LD50 is supplied with a hard anodised aluminium ground spike that can be painted to match the head. The cable is hidden within the ground spike, with an exit hole located at the bottom. The standard mounting length is 400mm.



LIGHT OUTPUT OPTIONS

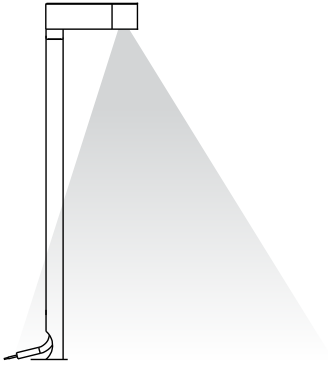
LD50-OB

The 18° x 37° oval beam offers a wide beam, allowing multiple LD50's to be positioned further apart whilst achieving a good even coverage.







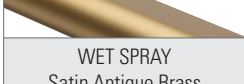
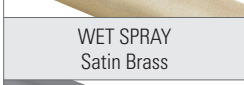




LD50-EOB

The 46° x 80° extra oval beam features additional diffusers and a 20° tilt film. This focuses the light towards the path providing a very wide diffused beam, allowing multiple LD50's to be positioned further apart whilst still achieving a good even coverage.



ORDER CODES & OPTIONS

Example: LD50-C1-700/LW22/EOB/Antique Bronze

Light Engine & drive current		LED colour		Beam angle		Finish
LD50-C1-						
<div style="display: flex; align-items: center; margin-bottom: 10px;"> <div style="border: 1px solid black; border-radius: 50%; width: 20px; height: 20px; display: flex; align-items: center; justify-content: center; margin-right: 5px;">○</div> <div style="background-color: #0070C0; color: white; padding: 2px 5px; font-weight: bold;">C1</div> </div>						
1.2W LED at 350mA	LD50-C1-350	Super Warm White (2200K)	/LW22	18° x 37°	OB	 WET SPRAY Black (RAL 9005)
1.7W LED at 500mA	LD50-C1-500	Extra Warm White (2700K)	/LW27	46° x 80°	EOB	 WET SPRAY White (RAL 9016)
2.4W LED at 700mA	LD50-C1-700	Warm White (3000K)	/LW30			 WET SPRAY Silver Anodised
		White (4000K) - on request	/LW40			 WET SPRAY Antique Bronze
		Cool White (5000K)	/LW50			 WET SPRAY Satin Antique Brass
						 WET SPRAY Satin Brass
						 WET SPRAY Anthracite Grey (RAL 7016)
						 WET SPRAY RAL Colours
						 POWDER COAT Textured Mars Bronze (SX350F)
						 POWDER COAT Textured Fir Green (RAL 6009)