

LD50

LOW GLARE ADJUSTABLE EXTERIOR LED PATH LIGHT



The LD50 low-level path light offers a wide distribution from a very compact fitting, reducing the number of luminaires required to achieve an even floor wash. With two oval beams available, the extra oval beam features an additional 20° tilt film to focus the light out onto the pathway, whilst the head remains horizontal for ultra low glare. The head can be adjusted up to 90° from horizontal to vertical, allowing the fitting to be placed further away from the path. Designed with a hidden cable located at the bottom of its ground spike, the minimal profile of the LD50 seamlessly integrates into its surroundings which can be further enhanced through a wide range of paint finishes.



KEY FEATURES



- > Low-level, very low glare path light with a wide beam distribution
- > Available in a 18° x 37° oval beam and 46° x 80° extra oval beam
- > The extra oval beam features an additional 20° tilt film to focus the wide beam distribution out onto the pathway
- > Wide beam distribution means less products need to be specified to achieve an even floor wash
- > Designed with a hidden cable located at the bottom of the ground spike
- > Friction set head is adjustable up to 90° for placement further away from the path
- > Wide range of wet spray and textured paint finishes available including: White (RAL 9016), Silver anodised, Anthracite Grey (RAL 7016), Black (RAL 9005), Antique Bronze, Satin Antique Brass, Satin Brass, Textured Fir Green (RAL 6009), Textured Mars Bronze (SX350F) or any RAL finish
- > Switched, 0-10V, Casambi, DMX, DALI or Mains dimmable drivers available

DIMENSIONS

For full dimensions please go to page 3.



WHITE LED ENGINE SPECIFICATION

| | | | |
|--------------------------------------|--|----------------|----------------|
| Engine |  C1 | | |
| Beam angles | 18° x 37°, 46° x 80° | | |
| LED manufacturer | NICHIA | | |
| Colour temperature* | 2200K, 2700K, 3000K, 4000K, 5000K | | |
| Current | 350mA | 500mA | 700mA |
| LED power (Max) | 1.1W (1.2W) | 1.5W (1.7W) | 2.1W (2.4W) |
| Delivered lumens (L ₁₀₀) | 82 | 108 | 140 |
| Lumens per circuit watt | 78 | 72 | 67 |
| CRI (Typ) | 93 | | |
| Forward voltage (V ₁₀₀) | 3.4V | | |
| Colour consistency | 2 SCDM | | |
| Peak intensity | 111 cd | | |
| LED Lumens | 213 | | |
| LOR | 0.39 | | |
| TM30 | RF93 | RG99 | |
| LED lifetime | L90B5 @ 90,000hrs | | |
| Applications |  | | |

These values are based around a LD50-C1-700-LW30-OB

*Lumen output data applies across all colour temperatures.

**Indicates the nominal power for the LED run at that particular current and includes losses associated with using an 85% efficient driver

*** UGR values based on room parameter of 4H 8H, C70 W50 F20

MECHANICAL

| | |
|---------------------|--|
| Ambient temperature | -20°C to +35°C (500mA/700mA), or -20°C to +45°C (350mA) |
| Glass | 1.1mm thick, low iron glass |
| Materials | Black hard anodised aluminium body |
| Weight of product | 0.3kg (including ground spike) |
| IP rating | IP65 |
| Wiring | In-series constant current wiring (pre-wired with 2 core cable at 2000mm - can be specified with up to 10m at an extra cost) |

ENVIRONMENTAL

| | |
|------|----------------------|
| TM65 | Available on request |
| TM66 | 2.2 |

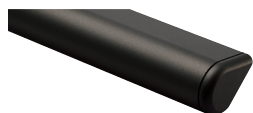
AVAILABLE FINISHES

Please refer to our finishes guide for full details

The LD50 body is machined from aluminium and painted in-house at LightGraphix. Paint finishes are suitable for interior and exterior use on surface mounted products. Our standard colours are below but we can accommodate any RAL request. Please view our full finishes guide online for more information.

WET SPRAY

Wet spray paint offers a fine coating and has a slightly metallic finish. It is suitable for interior, exterior and high-saline environments.



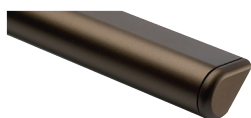
BLACK
(RAL 9005)



WHITE
(RAL 9016)



SILVER ANODISED



ANTIQUE BRONZE



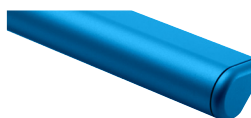
SATIN ANTIQUE BRASS



SATIN BRASS



ANTHRACITE GREY
(RAL 7016)



RAL COLOURS

POWDER COAT

Powder coat paint is suitable for interior and exterior environments.



TEXTURED MARS BRONZE
(SX350F)

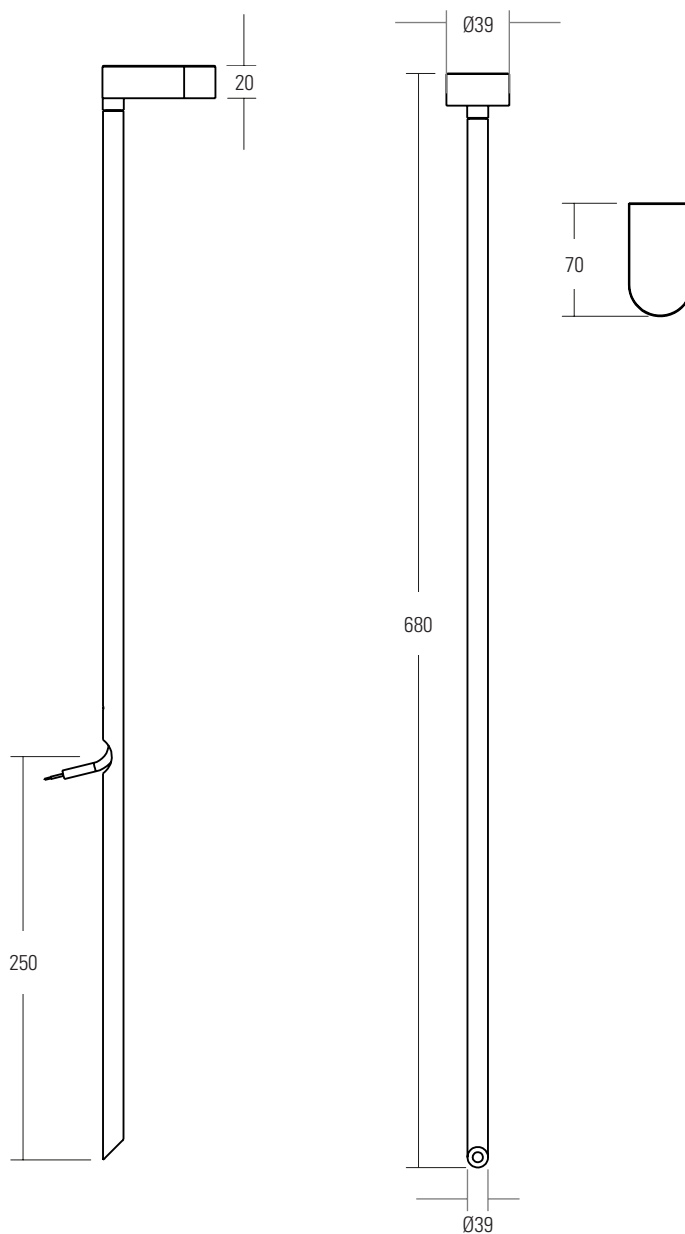


TEXTURED FIR GREEN
(RAL 6009)

MOUNTING OPTIONS AND DIMENSIONS

Dimensions in mm

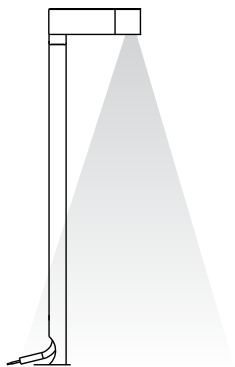
The LD50 is supplied with a hard anodised aluminium ground spike that can be painted to match the head. The cable is hidden within the ground spike, with an exit hole located at the bottom. The standard mounting length is 400mm.



LIGHT OUTPUT OPTIONS

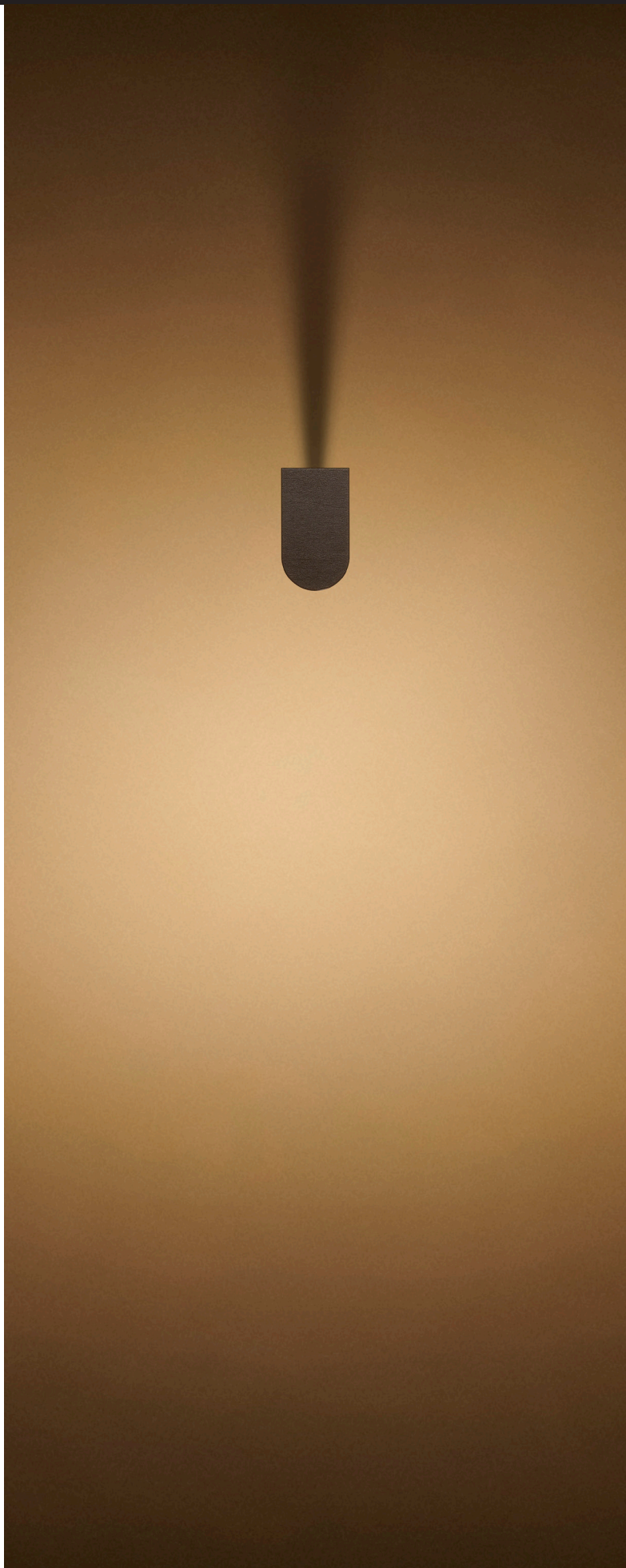
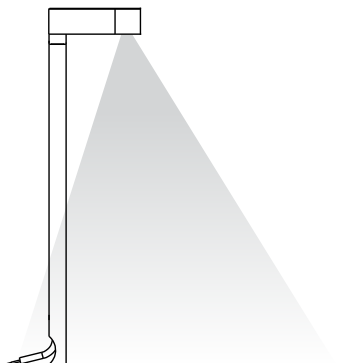
LD50-OB

The 18° x 37° oval beam offers a wide beam, allowing multiple LD50's to be positioned further apart whilst achieving a good even coverage.



LD50-EOB

The 46° x 80° extra oval beam features additional diffusers and a 20° tilt film. This focuses the light towards the path providing a very wide diffused beam, allowing multiple LD50's to be positioned further apart whilst still achieving a good even coverage.



ORDER CODES & OPTIONS

Example: LD50-C1-700/LW22/EOB/Antique Bronze

Light Engine & drive current

LED colour

Beam angle

Finish

LD50-C1- / / /

C1

| | |
|-------------------|-------------|
| 1.2W LED at 350mA | LD50-C1-350 |
| 1.7W LED at 500mA | LD50-C1-500 |
| 2.4W LED at 700mA | LD50-C1-700 |

| | |
|----------------------------|-------|
| Super Warm White (2200K) | /LW22 |
| Extra Warm White (2700K) | /LW27 |
| Warm White (3000K) | /LW30 |
| White (4000K) - on request | /LW40 |
| Cool White (5000K) | /LW50 |

| | |
|-----------|-----|
| 18° x 37° | OB |
| 46° x 80° | EOB |

| |
|---|
|  |
| WET SPRAY Black (RAL 9005) |
|  |
| WET SPRAY White (RAL 9016) |
|  |
| WET SPRAY Silver Anodised |
|  |
| WET SPRAY Antique Bronze |
|  |
| WET SPRAY Satin Antique Brass |
|  |
| WET SPRAY Satin Brass |
|  |
| WET SPRAY Anthracite Grey (RAL 7016) |
|  |
| WET SPRAY RAL Colours |
|  |
| POWDER COAT Textured Mars Bronze (SX350F) |
|  |
| POWDER COAT Textured Fir Green (RAL 6009) |